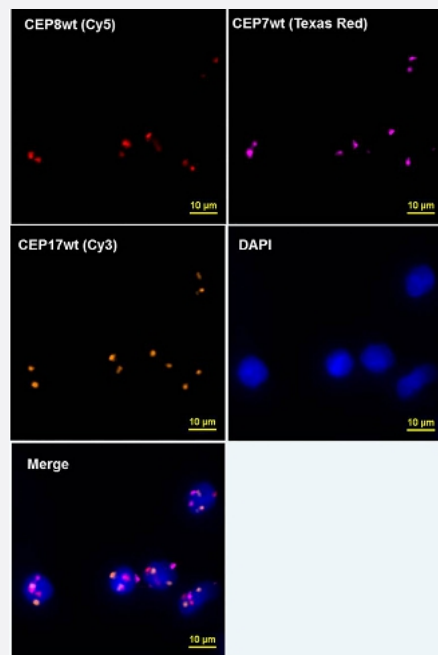


# mutaFISH™ CEP17wt DNA Probes

Catalog # FP0007

Size 1 Probe Set

## Applications



### mutation specific, Fluorescence *In Situ* Hybridization (Cells)

mutaFISH™ staining was performed *in situ* in human PBMC cells. CEP17 was detected via orange signal (Cy3).

## Specification

### Product Description

mutaFISH™ CEP17wt DNA Probes is designed to identify human CEP17 amplification on dsDNA in cells using padlock probe and *in situ* rolling-circle amplification technology.

### Reactivity

Human

### Supplied Product

Content:

1. mutaFISH™ CEP17wt DNA Probe
2. Detection Probe-Aqua 431

### Technology

[mutaFISH™ \(mutation-specific Fluorescence \*In Situ\* Hybridization\)](#)

### Comparison

[FISH Probes vs mutaFISH™ Probes](#)

**Fluorophore**

Aqua 431 (Excitation Peak (nm): 431; Emission Peak (nm): 480)

**Probe Position****Regulatory Status**

For research use only (RUO)

**Storage Instruction**

Store at -20°C.  
Aliquot to avoid repeated freezing and thawing.

**Note**

We recommend mutaFISH™ DNA Accessory Kit 2 for Cells (Catalog #: [KA4928](#)) which provides necessary reagents and enzymes for *in situ* restriction digestion, exonucleolysis, mutaFISH™ hybridization, ligation and amplification prior to mutaFISH™.

**Video**

## Applications

- mutation specific, Fluorescence *In Situ* Hybridization (Cells)

mutaFISH™ staining was performed *in situ* in human PBMC cells. CEP17 was detected via orange signal (Cy3).