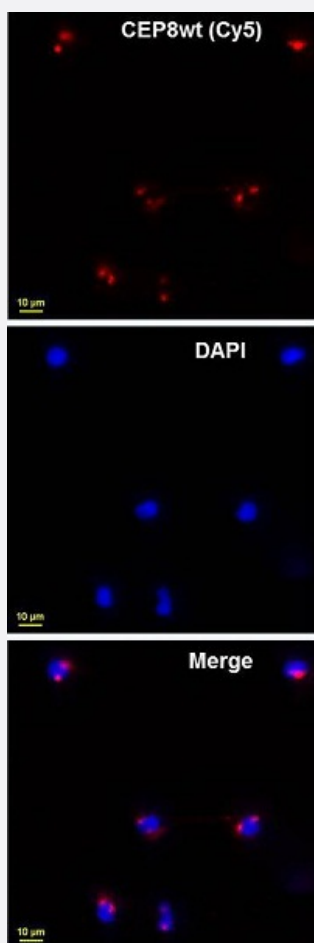


mutaFISH™ CEP8wt DNA Probes

Catalog # FP0005

Size 1 Probe Set

Applications



mutation specific, Fluorescence *In Situ* Hybridization (Cells)

mutaFISH™ staining was performed *in situ* in human PBMC cells. CEP8 was detected via red signal (Cy5).

Specification

Product Description

mutaFISH™ CEP8wt DNA Probes is designed to identify human CEP8 amplification on dsDNA in cells using padlock probe and *in situ* rolling-circle amplification technology.

Reactivity

Human

Supplied Product

Content:

1. mutaFISH™ CEP8wt DNA Probe
2. Detection Probe-Texas Red X

Technology[mutaFISH™ \(mutation-specific Fluorescence *In Situ* Hybridization\)](#)**Comparison**[FISH Probes vs mutaFISH™ Probes](#)**Fluorophore**

Texas Red X (Excitation Peak (nm): 595; Emission Peak 613)

Probe Position**Regulatory Status**

For research use only (RUO)

Storage Instruction

Store at -20°C.
Aliquot to avoid repeated freezing and thawing.

Note

We recommend mutaFISH™ DNA Accessory Kit 2 for Cells (Catalog #: [KA4928](#)) which provides necessary reagents and enzymes for *in situ* restriction digestion, exonucleolysis, mutaFISH™ hybridization, ligation and amplification prior to mutaFISH™.

Video

Applications

- mutation specific, Fluorescence *In Situ* Hybridization (Cells)

mutaFISH™ staining was performed *in situ* in human PBMC cells. CEP8 was detected via red signal (Cy5).