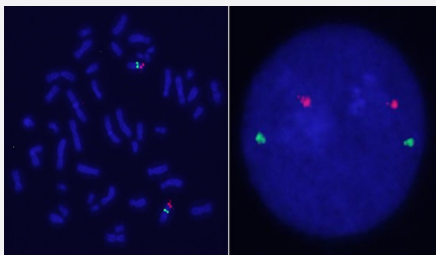


# GAPDH/CEN12q FISH Probe

Catalog # FG0268

Size 200 uL

## Applications



Hybridization position of the probes on the chromosome.

Hybridization position of the probes on the chromosome.

## Specification

### Product Description

Labeled FISH probes for identification of gene amplification using Fluorescent In Situ Hybridization Technique. ([Technology](#)).

### Probe 1

**Name:** GAPDH  
**Size:** Approximately 530kb  
**Fluorophore:** Texas Red  
**Location:** 14q13.31

### Probe 2

**Name:** CEN12q  
**Size:** Approximately 580kb  
**Fluorophore:** FITC  
**Location:** 12q12

### Origin

Human

Source	Genomic DNA
Form	Liquid
Notice	We <b>strongly recommend</b> the customer to use FFPE FISH PreTreatment Kit 1 (Catalog #: <a href="#">KA2375</a> or <a href="#">KA2691</a> ) for the pretreatment of Formalin-Fixed Paraffin-Embedded (FFPE) tissue sections.
Regulatory Status	For research use only (RUO)
Quality Control Testing	Representative images of normal human cell (lymphocyte) stain with the dual color FISH probe. The left image is chromosomes at metaphase, and the right image is an interphase nucleus.
Supplied Product	DAPI Counterstain (1500 ng/mL ) 125 uL for each 100 uL FISH Probe
Storage Instruction	Store at 4°C in the dark.
Note	Hybridization position of the probes on the chromosome. Hybridization position of the probes on the chromosome.

## Applications

- Fluorescent In Situ Hybridization (Cell)

[Protocol Download](#)

## Gene Info — GAPDH

Entrez GeneID	<a href="#">2597</a>
Gene Name	GAPDH
Gene Alias	G3PD, GAPD, MGC88685
Gene Description	glyceraldehyde-3-phosphate dehydrogenase
Omim ID	<a href="#">138400</a>
Gene Ontology	<a href="#">Hyperlink</a>
Gene Summary	The product of this gene catalyzes an important energy-yielding step in carbohydrate metabolism, the reversible oxidative phosphorylation of glyceraldehyde-3-phosphate in the presence of inorganic phosphate and nicotinamide adenine dinucleotide (NAD). The enzyme exists as a tetramer of identical chains. Many pseudogenes similar to this locus are present in the human genome. [provided by RefSeq]
Other Designations	OTTHUMP00000174431 OTTHUMP00000174432 aging-associated gene 9 protein glyceraldehyde 3-phosphate dehydrogenase

## Pathway

- [Biosynthesis of alkaloids derived from histidine and purine](#)
- [Biosynthesis of alkaloids derived from ornithine](#)
- [Biosynthesis of alkaloids derived from shikimate pathway](#)
- [Biosynthesis of alkaloids derived from terpenoid and polyketide](#)
- [Biosynthesis of phenylpropanoids](#)
- [Biosynthesis of plant hormones](#)
- [Biosynthesis of terpenoids and steroids](#)
- [Glycolysis / Gluconeogenesis](#)
- [Metabolic pathways](#)

## Disease

- [Alzheimer disease](#)
- [Cardiovascular Diseases](#)
- [Diabetes Complications](#)
- [Metabolic Syndrome X](#)
- [Neoplasms](#)
- [Nerve Degeneration](#)
- [Osteoporosis](#)