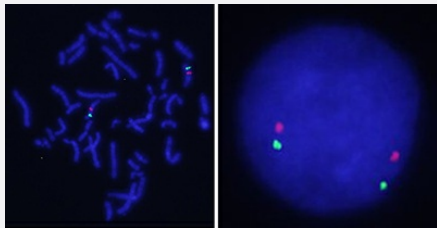


GLI1/CEN12p FISH Probe

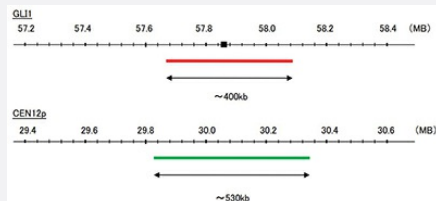
Catalog # FG0259 Size 100 uL

Applications



Hybridization position of the probes on the chromosome.

Hybridization position of the probes on the chromosome.



Specification

Product Description

Labeled FISH probes for identification of gene translocation using Fluorescent In Situ Hybridization Technique. ([Technology](#)).

Probe 1

Name: GLI1
Size: Approximately 400kb
Fluorophore: TexRed
Location: 12q13.3

Probe 2

Name: CEN12p
Size: Approximately 530kb
Fluorophore: TAMRA
Location: 12p11.22

Origin

Human

Source	Genomic DNA
Reactivity	Human
Form	Liquid
Notice	We strongly recommend the customer to use FFPE FISH PreTreatment Kit 1 (Catalog #: KA2375 or KA2691) for the pretreatment of Formalin-Fixed Paraffin-Embedded (FFPE) tissue sections.
Regulatory Status	For research use only (RUO)
Quality Control Testing	Representative images of normal human cell (lymphocyte) stain with the dual color FISH probe. The left image is chromosomes at metaphase, and the right image is an interphase nucleus.
Supplied Product	DAPI Counterstain (1500 ng/mL) 125 uL for each 100 uL FISH Probe
Storage Instruction	Store at 4°C in the dark.
Note	Hybridization position of the probes on the chromosome. Hybridization position of the probes on the chromosome.

Applications

- Fluorescent In Situ Hybridization (Cell)

[Protocol Download](#)

Gene Info — GLI1

Entrez GeneID	2735
Gene Name	GLI1
Gene Alias	GLI
Gene Description	glioma-associated oncogene homolog 1 (zinc finger protein)
Omim ID	165220
Gene Ontology	Hyperlink
Gene Summary	This gene encodes a member of the Kruppel family of zinc finger proteins. The encoded transcription factor is activated by the sonic hedgehog signal transduction cascade and regulates stem cell proliferation. The activity and nuclear localization of this protein is negatively regulated by p53 in a negative inhibitory loop. Multiple transcript variants encoding different isoforms have been found for this gene. [provided by RefSeq]

Other Designations

glioma-associated oncogene homolog (zinc finger protein)|glioma-associated oncogene homolog 1

Pathway

- [Basal cell carcinoma](#)
- [Hedgehog signaling pathway](#)
- [Pathways in cancer](#)

Disease

- [Carcinoma](#)
- [Genetic Predisposition to Disease](#)
- [Heart Septal Defects](#)
- [Inflammation](#)
- [Inflammatory Bowel Diseases](#)
- [Kidney Failure](#)
- [Skin Neoplasms](#)