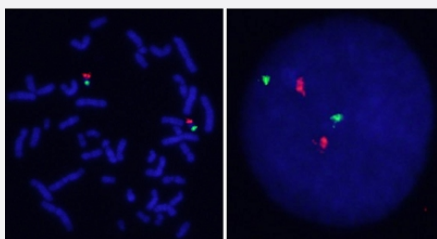


MIR19q13.42/CEN19p FISH Probe

Catalog # FG0250

Size 200 uL, 100 uL

Applications



Hybridization position of the probes on the chromosome.

Hybridization position of the probes on the chromosome.

Specification

Product Description

Labeled FISH probes for identification of gene amplification using Fluorescent In Situ Hybridization Technique. ([Technology](#)).

Probe 1

Name: MIR19q13.42
Size: Approximately 380kb
Fluorophore: Texas Red
Location: 19p13.42

Probe 2

Name: CEN19p
Size: Approximately 570kb
Fluorophore: FITC
Location: 19p13.11

Origin

Human

Source	Genomic DNA
Reactivity	Human
Notice	We strongly recommend the customer to use FFPE FISH PreTreatment Kit 1 (Catalog #: KA2375 or KA2691) for the pretreatment of Formalin-Fixed Paraffin-Embedded (FFPE) tissue sections.
Regulatory Status	For research use only (RUO)
Quality Control Testing	Representative images of normal human cell (lymphocyte) stain with the dual color FISH probe. The left image is chromosomes at metaphase, and the right image is an interphase nucleus.
Storage Instruction	Store at 4°C in the dark.
Note	Hybridization position of the probes on the chromosome. Hybridization position of the probes on the chromosome.

Applications

- Fluorescent In Situ Hybridization (Cell)

[Protocol Download](#)