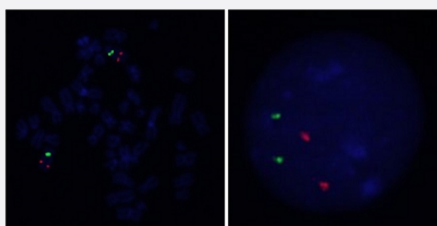


EGR1/CEN5q FISH Probe

Catalog # FG0213

Size 200 uL, 100 uL

Applications



Hybridization position of the probes on the chromosome.

Hybridization position of the probes on the chromosome.

Specification

Product Description

Labeled FISH probes for identification of gene amplification using Fluorescent In Situ Hybridization Technique. ([Technology](#)).

Probe 1

Name: EGR1
Size: Approximately 260kb
Fluorophore: TexRed
Location: 5q31.1

Probe 2

Name: CEN5q
Size: Approximately 700kb
Fluorophore: FITC
Location: 5q11.2

Origin

Human

Source	Genomic DNA
Reactivity	Human
Form	Liquid
Notice	We strongly recommend the customer to use FFPE FISH PreTreatment Kit 1 (Catalog #: KA2375 or KA2691) for the pretreatment of Formalin-Fixed Paraffin-Embedded (FFPE) tissue sections.
Regulation Status	For research use only (RUO)
Quality Control Testing	Representative images of normal human cell (lymphocyte) stain with the dual color FISH probe. The left image is chromosomes at metaphase, and the right image is an interphase nucleus.
Supplied Product	DAPI Counterstain (1500 ng/mL) 125 uL for each 100 uL FISH Probe
Storage Instruction	Store at 4°C in the dark.
Note	Hybridization position of the probes on the chromosome. Hybridization position of the probes on the chromosome.

Applications

- Fluorescent In Situ Hybridization (Cell)

[Protocol Download](#)

Gene Info — EGR1

Entrez GeneID	1958
Gene Name	EGR1
Gene Alias	AT225, G0S30, KROX-24, NGFI-A, TIS8, ZIF-268, ZNF225
Gene Description	early growth response 1
Omim ID	128990
Gene Ontology	Hyperlink
Gene Summary	The protein encoded by this gene belongs to the EGR family of C2H2-type zinc-finger proteins. It is a nuclear protein and functions as a transcriptional regulator. The products of target genes it activates are required for differentiation and mitogenesis. Studies suggest this is a cancer suppressor gene. [provided by RefSeq]

Other Designations

early growth response protein 1|nerve growth factor-induced protein A|transcription factor ETR10
3|zinc finger protein 225

Pathway

- [Prion diseases](#)

Disease

- [Asthma](#)
- [Genetic Predisposition to Disease](#)
- [Myopia](#)
- [Rhinitis](#)
- [Schizophrenia](#)