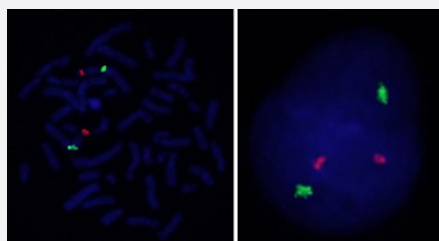


MIIP/CEN1p FISH Probe

Catalog # FG0204

Size 200 uL, 100 uL

Applications



Hybridization position of the probes on the chromosome.

Hybridization position of the probes on the chromosome.

Specification

Product Description

Labeled FISH probes for identification of gene amplification using Fluorescent In Situ Hybridization Technique. ([Technology](#)).

Probe 1

Name: MIIP
Size: Approximately 170kb
Fluorophore: TexRed
Location: 1p36.22

Probe 2

Name: CEN1p
Size: Approximately 780kb
Fluorophore: FITC
Location: 1q13.3

Origin

Human

Source	Genomic DNA
Reactivity	Human
Form	Liquid
Notice	We strongly recommend the customer to use FFPE FISH PreTreatment Kit 1 (Catalog #: KA2375 or KA2691) for the pretreatment of Formalin-Fixed Paraffin-Embedded (FFPE) tissue sections.
Regulation Status	For research use only (RUO)
Quality Control Testing	Representative images of normal human cell (lymphocyte) stain with the dual color FISH probe. The left image is chromosomes at metaphase, and the right image is an interphase nucleus.
Supplied Product	DAPI Counterstain (1500 ng/mL) 125 uL for each 100 uL FISH Probe
Storage Instruction	Store at 4°C in the dark.
Note	Hybridization position of the probes on the chromosome. Hybridization position of the probes on the chromosome.

Applications

- Fluorescent In Situ Hybridization (Cell)

[Protocol Download](#)

Gene Info — MIIP

Entrez GeneID	60672
Gene Name	MIIP
Gene Alias	IIP45
Gene Description	migration and invasion inhibitory protein
Omim ID	608772
Gene Ontology	Hyperlink
Other Designations	migration and invasion-inhibitory protein IGFBP2-binding protein invasion-inhibitory protein 45

Disease

- [Genetic Predisposition to Disease](#)
- [Hematologic Diseases](#)
- [Occupational Diseases](#)