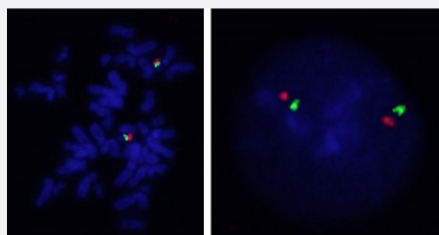


# BCL3/CEN19p FISH Probe

Catalog # FG0178

Size 200 uL, 100 uL

## Applications



Hybridization position of the probes on the chromosome:

Hybridization position of the probes on the chromosome:

□

## Specification

|                            |   |
|----------------------------|---|
| <b>Product Description</b> | Labeled FISH probes for identification of gene amplification using Fluorescent In Situ Hybridization Technique. ( <a href="#">Technology</a> ). |
| <b>Probe 1</b>             | <b>Name:</b> BCL3<br><b>Size:</b> Approximately 330kb<br><b>Fluorophore:</b> Texas Red<br><b>Location:</b> 19q13.3                              |
| <b>Probe 2</b>             | <b>Name:</b> CEN19p<br><b>Size:</b> Approximately 570kb<br><b>Fluorophore:</b> FITC<br><b>Location:</b> 19p13.11                                |
| <b>Origin</b>              | Human   |

|                         |   |
|-------------------------|---|
| Source                  | Genomic DNA   |
| Reactivity              | Human   |
| Form                    | Liquid  |
| Notice                  | We <b>strongly recommend</b> the customer to use FFPE FISH PreTreatment Kit 1 (Catalog #: <a href="#">KA2375</a> or <a href="#">KA2691</a> ) for the pretreatment of Formalin-Fixed Paraffin-Embedded (FFPE) tissue sections. |
| Regulation Status       | For research use only (RUO)   |
| Quality Control Testing | Representative images of normal human cell (lymphocyte) stain with the dual color FISH probe. The left image is chromosomes at metaphase, and the right image is an interphase nucleus.                                       |
| Supplied Product        | DAPI Counterstain (1500 ng/mL ) 125 uL for each 100 uL FISH Probe   |
| Storage Instruction     | Store at 4°C in the dark.   |
| Note                    | Hybridization position of the probes on the chromosome:<br>Hybridization position of the probes on the chromosome:  |

## Applications

- Fluorescent In Situ Hybridization (Cell)

[Protocol Download](#)

## Gene Info — BCL3

|                  |                           |
|------------------|---------------------------|
| Entrez GeneID    | <a href="#">602</a>       |
| Gene Name        | BCL3                      |
| Gene Alias       | BCL4, D19S37              |
| Gene Description | B-cell CLL/lymphoma 3     |
| Omim ID          | <a href="#">109560</a>    |
| Gene Ontology    | <a href="#">Hyperlink</a> |

**Gene Summary**

This gene is a proto-oncogene candidate. It is identified by its translocation into the immunoglobulin alpha-locus in some cases of B-cell leukemia. The protein encoded by this gene contains seven ankyrin repeats, which are most closely related to those found in I kappa B proteins. This protein functions as a transcriptional co-activator that activates through its association with NF-kappa B homodimers. The expression of this gene can be induced by NF-kappa B, which forms a part of the autoregulatory loop that controls the nuclear residence of p50 NF-kappa B. [provided by RefSeq]

**Other Designations**

B-cell leukemia/lymphoma 3|B-cell lymphoma 3-encoded protein|chronic lymphatic leukemia protein

**Disease**

- [Cardiovascular Diseases](#)
- [Cleft Lip](#)
- [Cleft Palate](#)
- [Crohn Disease](#)
- [Disease Models](#)
- [Genetic Predisposition to Disease](#)