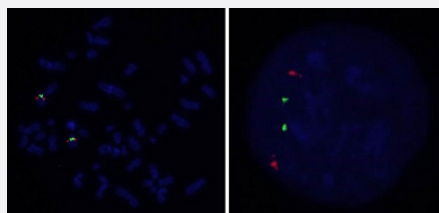


WDFY2/CEN13q FISH Probe

Catalog # FG0176

Size 200 uL, 100 uL

Applications



Hybridization position of the probes on the chromosome:

Hybridization position of the probes on the chromosome:

□

Specification

Product Description

Labeled FISH probes for identification of gene amplification using Fluorescent In Situ Hybridization Technique. ([Technology](#)).

Probe 1

Name: WDFY2
Size: Approximately 270kb
Fluorophore: Texas Red
Location: 13q14.3

Probe 2

Name: CEN13q
Size: Approximately 550kb
Fluorophore: FITC
Location: 13q12.11

Origin

Human

Source	Genomic DNA
Reactivity	Human
Form	Liquid
Notice	We strongly recommend the customer to use FFPE FISH PreTreatment Kit 1 (Catalog #: KA2375 or KA2691) for the pretreatment of Formalin-Fixed Paraffin-Embedded (FFPE) tissue sections.
Regulation Status	For research use only (RUO)
Quality Control Testing	Representative images of normal human cell (lymphocyte) stain with the dual color FISH probe. The left image is chromosomes at metaphase, and the right image is an interphase nucleus.
Supplied Product	DAPI Counterstain (1500 ng/mL) 125 uL for each 100 uL FISH Probe
Storage Instruction	Store at 4°C in the dark.
Note	Hybridization position of the probes on the chromosome: Hybridization position of the probes on the chromosome:

Applications

- Fluorescent In Situ Hybridization (Cell)

[Protocol Download](#)

Gene Info — WDFY2

Entrez GeneID	115825
Gene Name	WDFY2
Gene Alias	PROF, RP11-147H23.1, WDF2, ZFYVE22
Gene Description	WD repeat and FYVE domain containing 2
Omim ID	610418
Gene Ontology	Hyperlink
Gene Summary	This gene encodes a protein that contains two WD domains and an FYVE zinc finger region. The function of this gene is unknown. An alternatively spliced transcript variant of this gene may exist. [provided by RefSeq
Other Designations	OTTHUMP00000018795 WD40 and FYVE domain containing 2 propeller-FYVE protein