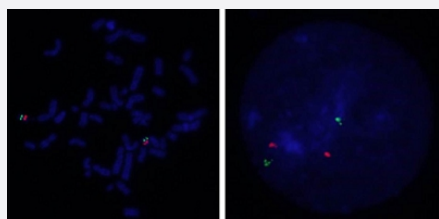


SRC/CEN20p FISH Probe

Catalog # FG0175 Size 200 uL, 100 uL

Applications



Hybridization position of the probes on the chromosome:

Hybridization position of the probes on the chromosome:

□

Specification

Product Description	Labeled FISH probes for identification of gene amplification using Fluorescent In Situ Hybridization Technique. (Technology).
Probe 1	Name: SRC Size: Approximately 150kb Fluorophore: Texas Red Location: 20q12-q13
Probe 2	Name: CEN20p Size: Approximately 400kb Fluorophore: FITC Location: 20p11.21
Origin	Human

Source	Genomic DNA
Reactivity	Human
Form	Liquid
Notice	We strongly recommend the customer to use FFPE FISH PreTreatment Kit 1 (Catalog #: KA2375 or KA2691) for the pretreatment of Formalin-Fixed Paraffin-Embedded (FFPE) tissue sections.
Regulation Status	For research use only (RUO)
Quality Control Testing	Representative images of normal human cell (lymphocyte) stain with the dual color FISH probe. The left image is chromosomes at metaphase, and the right image is an interphase nucleus.
Supplied Product	DAPI Counterstain (1500 ng/mL) 125 uL for each 100 uL FISH Probe
Storage Instruction	Store at 4°C in the dark.
Note	Hybridization position of the probes on the chromosome: Hybridization position of the probes on the chromosome:

Applications

- Fluorescent In Situ Hybridization (Cell)

[Protocol Download](#)

Gene Info — SRC

Entrez GeneID	6714
Gene Name	SRC
Gene Alias	ASV, SRC1, c-SRC, p60-Src
Gene Description	v-src sarcoma (Schmidt-Ruppin A-2) viral oncogene homolog (avian)
Omim ID	190090
Gene Ontology	Hyperlink
Gene Summary	This gene is highly similar to the v-src gene of Rous sarcoma virus. This proto-oncogene may play a role in the regulation of embryonic development and cell growth. The protein encoded by this gene is a tyrosine-protein kinase whose activity can be inhibited by phosphorylation by c-SRC kinase. Mutations in this gene could be involved in the malignant progression of colon cancer. Two transcript variants encoding the same protein have been found for this gene. [provided by RefSeq]

Other Designations

OTTHUMP00000174476|OTTHUMP00000174477|proto-oncogene tyrosine-protein kinase SRC|protooncogene SRC, Rous sarcoma|tyrosine kinase pp60c-src|tyrosine-protein kinase SRC-1

Pathway

- [Adherens junction](#)
- [Endocytosis](#)
- [Epithelial cell signaling in Helicobacter pylori infection](#)
- [ErbB signaling pathway](#)
- [Focal adhesion](#)
- [Gap junction](#)
- [GnRH signaling pathway](#)
- [Tight junction](#)
- [VEGF signaling pathway](#)

Disease

- [Genetic Predisposition to Disease](#)
- [HIV Infections](#)
- [Thyroid Neoplasms](#)