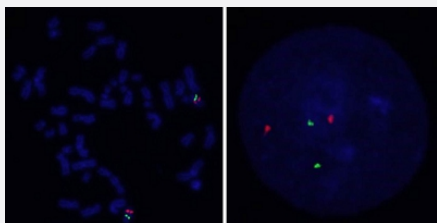


ACSS3/CEN12p FISH Probe

Catalog # FG0171

Size 200 uL, 100 uL

Applications



Hybridization position of the probes on the chromosome:

Hybridization position of the probes on the chromosome:

□

Specification

Product Description

Labeled FISH probes for identification of gene amplification using Fluorescent In Situ Hybridization Technique. ([Technology](#)).

Probe 1

Name: ACSS3
Size: Approximately 310kb
Fluorophore: Texas Red
Location: 12q21.31

Probe 2

Name: CEN12p
Size: Approximately 580kb
Fluorophore: FITC
Location: 12q12

Origin

Human

Source	Genomic DNA
Reactivity	Human
Form	Liquid
Notice	We strongly recommend the customer to use FFPE FISH PreTreatment Kit 1 (Catalog #: KA2375 or KA2691) for the pretreatment of Formalin-Fixed Paraffin-Embedded (FFPE) tissue sections.
Regulation Status	For research use only (RUO)
Quality Control Testing	Representative images of normal human cell (lymphocyte) stain with the dual color FISH probe. The left image is chromosomes at metaphase, and the right image is an interphase nucleus.
Supplied Product	DAPI Counterstain (1500 ng/mL) 125 uL for each 100 uL FISH Probe
Storage Instruction	Store at 4°C in the dark.
Note	Hybridization position of the probes on the chromosome: Hybridization position of the probes on the chromosome:

Applications

- Fluorescent In Situ Hybridization (Cell)

[Protocol Download](#)

Gene Info — ACSS3

Entrez GeneID	79611
Gene Name	ACSS3
Gene Alias	FLJ21963
Gene Description	acyl-CoA synthetase short-chain family member 3
Gene Ontology	Hyperlink
Other Designations	-

Pathway

- [Metabolic pathways](#)

- [Propanoate metabolism](#)

Disease

- [Tobacco Use Disorder](#)