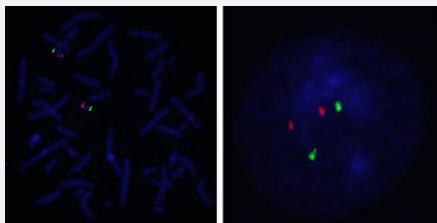


# 19p13.3/19q13.13 FISH Probe

Catalog # FG0159

Size 200 uL, 100 uL

## Applications



Hybridization position of the probes on the chromosome.

Hybridization position of the probes on the chromosome.

## Specification

<b>Product Description</b>	Labeled FISH probes for identification of gene amplification using Fluorescent In Situ Hybridization Technique. ( <a href="#">Technology</a> ).
<b>Probe 1</b>	<b>Name:</b> 19p13.3 <b>Size:</b> Approximately 320kb <b>Fluorophore:</b> Texas Red <b>Location:</b> 19p13
<b>Probe 2</b>	<b>Name:</b> 19q13.13 <b>Size:</b> Approximately 260kb <b>Fluorophore:</b> FITC <b>Location:</b> 19q13.13
<b>Probe Gap</b>	The gap between two probes is approximately 38,800 kb

Origin	Human
Source	Genomic DNA
Reactivity	Human
Form	Liquid
Notice	We <b>strongly recommend</b> the customer to use FFPE FISH PreTreatment Kit 1 (Catalog #: <a href="#">KA2375</a> or <a href="#">KA2691</a> ) for the pretreatment of Formalin-Fixed Paraffin-Embedded (FFPE) tissue sections.
Regulation Status	For research use only (RUO)
Quality Control Testing	Representative images of normal human cell (lymphocyte) stain with the dual color FISH probe. The left image is chromosomes at metaphase, and the right image is an interphase nucleus.
Supplied Product	DAPI Counterstain (1500 ng/mL ) 125 uL for each 100 uL FISH Probe
Storage Instruction	Store at 4°C in the dark.
Note	Hybridization position of the probes on the chromosome. Hybridization position of the probes on the chromosome.

## Applications

- Fluorescent In Situ Hybridization (Cell)

[Protocol Download](#)