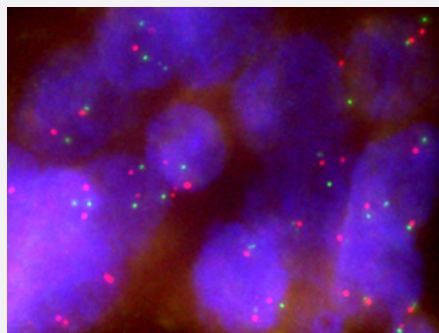


YAP1/CEN11p FISH Probe

Catalog # FG0076

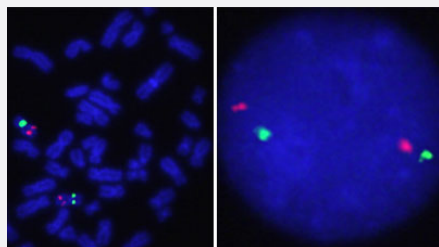
Size 200 uL, 100 uL

Applications



Fluorescent *In Situ* Hybridization (Formalin/PFA-fixed paraffin-embedded sections)

Human prostate cancer (FFPE) stained with YAP1/CEN11p FISH Probe. Human prostate cancer showed no YAP1 gene amplification.



Hybridization position of the probes on the chromosome:

Hybridization position of the probes on the chromosome:

□

Specification

Product Description

Labeled FISH probes for identification of gene amplification using Fluorescent In Situ Hybridization Technique. ([Technology](#)).

Probe 1	Name: YAP1 Size: Approximately 190kb Fluorophore: Texas Red Location: 11q22.1-q22.2
Probe 2	Name: CEN11p Size: Approximately 630kb Fluorophore: FITC Location: 11p11.12
Probe Gap	The gap between two probes is approximately 54,300 kb.
Origin	Human
Source	Genomic DNA
Reactivity	Human
Form	Liquid
Notice	We strongly recommend the customer to use FFPE FISH PreTreatment Kit 1 (Catalog #: KA2375 or KA2691) for the pretreatment of Formalin-Fixed Paraffin-Embedded (FFPE) tissue sections.
Regulation Status	For research use only (RUO)
Quality Control Testing	Representative images of normal human cell (lymphocyte) stain with the dual color FISH probe. The left image is chromosomes at metaphase, and the right image is an interphase nucleus.
Supplied Product	DAPI Counterstain (1500 ng/mL) 125 uL for each 100 uL FISH Probe
Storage Instruction	Store at 4°C in the dark.
Note	Hybridization position of the probes on the chromosome: Hybridization position of the probes on the chromosome:

Applications

- Fluorescent In Situ Hybridization (Cell)

[Protocol Download](#)

- Fluorescent *In Situ* Hybridization (Formalin/PFA-fixed paraffin-embedded sections)

Human prostate cancer (FFPE) stained with YAP1/CEN11p FISH Probe. Human prostate cancer showed no YAP1 gene amplification.

[Protocol Download](#)

Gene Info — YAP1

Entrez GeneID [10413](#)**Gene Name** YAP1**Gene Alias** YAP, YAP2, YAP65, YKI**Gene Description** Yes-associated protein 1, 65kDa**Omim ID** [606608](#)**Gene Ontology** [Hyperlink](#)

Gene Summary This gene encodes the human ortholog of chicken YAP protein which binds to the SH3 domain of the Yes proto-oncogene product. This protein contains a WW domain that is found in various structural, regulatory and signaling molecules in yeast, nematode, and mammals, and may be involved in protein-protein interaction. [provided by RefSeq]

Other Designations yes-associated protein 2

Disease

- [Tobacco Use Disorder](#)