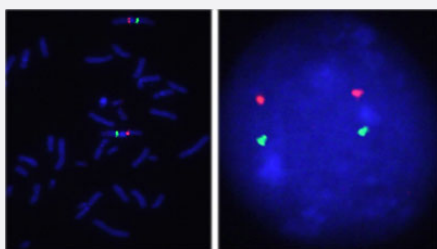


CKS1B/CEN1p FISH Probe

Catalog # FG0071

Size 200 uL, 100 uL

Applications



Hybridization position of the probes on the chromosome:

Hybridization position of the probes on the chromosome:

Specification

Product Description

Labeled FISH probes for identification of gene amplification using Fluorescent In Situ Hybridization Technique. ([Technology](#)).

Probe 1

Name: CKS1B
Size: Approximately 170kb
Fluorophore: Texas Red
Location: 1q21

Probe 2

Name: CEN1p
Size: Approximately 780kb
Fluorophore: FITC
Location: 1p13.3

Probe Gap

The gap between two probes is approximately 44,200 kb.

Origin	Human
Source	Genomic DNA
Reactivity	Human
Form	Liquid
Notice	We strongly recommend the customer to use FFPE FISH PreTreatment Kit 1 (Catalog #: KA2375 or KA2691) for the pretreatment of Formalin-Fixed Paraffin-Embedded (FFPE) tissue sections.
Regulation Status	For research use only (RUO)
Quality Control Testing	Representative images of normal human cell (lymphocyte) stain with the dual color FISH probe. The left image is chromosomes at metaphase, and the right image is an interphase nucleus.
Supplied Product	DAPI Counterstain (1500 ng/mL) 125 uL for each 100 uL FISH Probe
Storage Instruction	Store at 4°C in the dark.
Note	Hybridization position of the probes on the chromosome: Hybridization position of the probes on the chromosome:

Applications

- Fluorescent In Situ Hybridization (Cell)

[Protocol Download](#)

Gene Info — CKS1B

Entrez GeneID	1163
Gene Name	CKS1B
Gene Alias	CKS1, PNAS-16, PNAS-18, ckshs1
Gene Description	CDC28 protein kinase regulatory subunit 1B
Omim ID	116900
Gene Ontology	Hyperlink

Gene Summary

CKS1B protein binds to the catalytic subunit of the cyclin dependent kinases and is essential for their biological function. The CKS1B mRNA is found to be expressed in different patterns through the cell cycle in HeLa cells, which reflects a specialized role for the encoded protein. At least two transcript variants have been identified for this gene, and it appears that only one of them encodes a protein. [provided by RefSeq]

Other Designations

CDC2-associated protein CKS1|CDC28 protein kinase 1|CDC28 protein kinase 1B|NB4 apoptosis/differentiation related protein|OTTHUMP00000035541|PNAS-143|cell division control protein CKS1|cyclin-dependent kinases regulatory subunit 1

Pathway

- [Pathways in cancer](#)
- [Small cell lung cancer](#)

Disease

- [Tobacco Use Disorder](#)