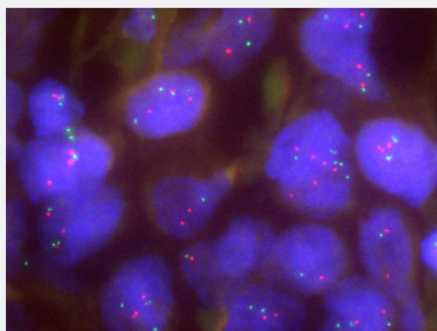


p14/CEN11p FISH Probe

Catalog # FG0061

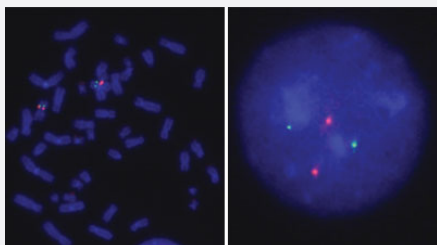
Size 200 uL, 100 uL

Applications



Fluorescent *In Situ* Hybridization (Formalin/PFA-fixed paraffin-embedded sections)

Human breast cancer (FFPE) stained with p14/CEN11p FISH Probe. Human breast cancer showed no p14 gene amplification.



Hybridization position of the probes on the chromosome:

Hybridization position of the probes on the chromosome:

□

Specification

Product Description

Labeled FISH probes for identification of gene amplification using Fluorescent In Situ Hybridization Technique. ([Technology](#)).

Probe 1	Name: p14 Size: Approximately 270kb Fluorophore: Texas Red Location: 11q13.2
Probe 2	Name: CEN11p Size: Approximately 630kb Fluorophore: FITC Location: 11p11.12
Probe Gap	The gap between two probes is approximately 19,600 kb.
Origin	Human
Source	Genomic DNA
Reactivity	Human
Form	Liquid
Notice	We strongly recommend the customer to use FFPE FISH PreTreatment Kit 1 (Catalog #: KA2375 or KA2691) for the pretreatment of Formalin-Fixed Paraffin-Embedded (FFPE) tissue sections.
Regulation Status	For research use only (RUO)
Quality Control Testing	Representative images of normal human cell (lymphocyte) stain with the dual color FISH probe. The left image is chromosomes at metaphase, and the right image is an interphase nucleus.
Supplied Product	DAPI Counterstain (1500 ng/mL) 125 uL for each 100 uL FISH Probe
Storage Instruction	Store at 4°C in the dark.
Note	Hybridization position of the probes on the chromosome: Hybridization position of the probes on the chromosome:

Applications

- Fluorescent In Situ Hybridization (Cell)

[Protocol Download](#)

- Fluorescent *In Situ* Hybridization (Formalin/PFA-fixed paraffin-embedded sections)

Human breast cancer (FFPE) stained with p14/CEN11p FISH Probe. Human breast cancer showed no p14 gene amplification.

[Protocol Download](#)

Gene Info — CDK2AP2

Entrez GeneID	10263
Gene Name	CDK2AP2
Gene Alias	DOC-1R, FLJ10636, p14
Gene Description	cyclin-dependent kinase 2 associated protein 2
Gene Ontology	Hyperlink
Other Designations	CDK2-associated protein 2 tumor suppressor deleted in oral cancer related 1 tumor suppressor d eleted in oral cancer-related 1