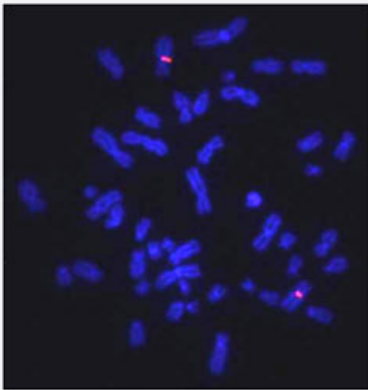


CEN6p (Texas Red) FISH Probe

Catalog # FC0047 Size 20 uL

Applications



Hybridization position of the probes on the chromosome:

Hybridization position of the probes on the chromosome:

Specification

Product Description	Labeled FISH probes as chromosomal markers using Fluorescent In Situ Hybridization Technique. (Technology).
Probe	Name: CEN6p Size: Approximately 660kb Fluorophore: Texas Red Location: 6p12.1
Origin	Human
Source	Genomic DNA
Reactivity	Human

Notice	We strongly recommend the customer to use FFPE FISH PreTreatment Kit 1 (Catalog #: KA2375 or KA2691) for the pretreatment of Formalin-Fixed Paraffin-Embedded (FFPE) tissue sections.
Regulation Status	For research use only (RUO)
Quality Control Testing	Representative images of normal human cell (lymphocyte) at metaphase stain with the FISH probe.
Recommend Usage	The probe is provided in 5x concentrated format, to allow mixing of up to 5 chromosome FISH probes in a single hybridization assay. When used alone, it should be diluted to 1x with FISH Hybridization Buffer (Cat # U0028 or U0029) before use.
Supplied Product	FISH Hybridization Buffer (80 uL)
Storage Instruction	Store at 4°C in the dark.
Note	Hybridization position of the probes on the chromosome: Hybridization position of the probes on the chromosome:

Applications

- Fluorescent In Situ Hybridization (Cell)

[Protocol Download](#)