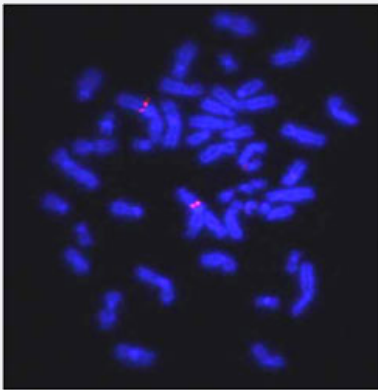


# CEN1q (Texas Red) FISH Probe

Catalog # FC0007      Size 20 uL

## Applications



Hybridization position of the probes on the chromosome:

Hybridization position of the probes on the chromosome:

## Specification

<b>Product Description</b>	Labeled FISH probes as chromosomal markers using Fluorescent In Situ Hybridization Technique. ( <a href="#">Technology</a> ).
<b>Probe</b>	<b>Name:</b> CEN1q <b>Size:</b> Approximately 600kb <b>Fluorophore:</b> Texas Red <b>Location:</b> 1q21.3
<b>Origin</b>	Human
<b>Source</b>	Genomic DNA
<b>Reactivity</b>	Human

<b>Notice</b>	We <b>strongly recommend</b> the customer to use FFPE FISH PreTreatment Kit 1 (Catalog #: <a href="#">KA2375</a> or <a href="#">KA2691</a> ) for the pretreatment of Formalin-Fixed Paraffin-Embedded (FFPE) tissue sections.
<b>Regulation Status</b>	For research use only (RUO)
<b>Quality Control Testing</b>	Representative images of normal human cell (lymphocyte) at metaphase stain with the FISH probe.
<b>Recommend Usage</b>	The probe is provided in 5x concentrated format, to allow mixing of up to 5 chromosome FISH probes in a single hybridization assay. When used alone, it should be diluted to 1x with FISH Hybridization Buffer (Cat # <a href="#">U0028</a> or <a href="#">U0029</a> ) before use.
<b>Supplied Product</b>	FISH Hybridization Buffer (80 uL)
<b>Storage Instruction</b>	Store at 4°C in the dark.
<b>Note</b>	Hybridization position of the probes on the chromosome: Hybridization position of the probes on the chromosome:

## Applications

- Fluorescent In Situ Hybridization (Cell)

[Protocol Download](#)