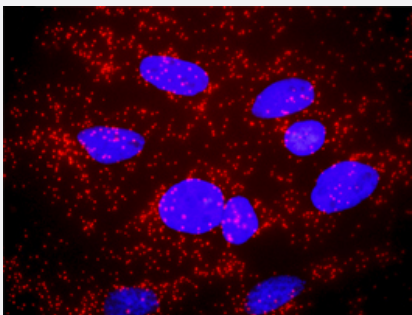


RPS6KB1(phospho S424) & RPS6KB1 Protein Phosphorylation Antibody Pair

Catalog # DP0225 Size 1 Set

Applications



Representative image of Proximity Ligation Assay of protein phosphorylation. HeLa cells were stained with dual recognition antibody pair set, rabbit polyclonal antibody 1:1200 and mouse monoclonal antibody 1:50. Each red dot represents one single phosphorylated protein. The images were analyzed using an optimized freeware (BlobFinder) download from The Centre for Image Analysis at Uppsala University.

Specification

Product Description	This protein phosphorylation antibody pair set comes with two antibodies, one against the RPS6KB1 protein, and the other against the specific S424 phosphorylated site of RPS6KB1 for use in in situ Proximity Ligation Assay . See Publication Reference below .
Reactivity	Human
Quality Control Testing	Dual recognition immunofluorescence result. Representative image of Proximity Ligation Assay of protein phosphorylation. HeLa cells were stained with dual recognition antibody pair set, rabbit polyclonal antibody 1:1200 and mouse monoclonal antibody 1:50. Each red dot represents one single phosphorylated protein. The images were analyzed using an optimized freeware (BlobFinder) download from The Centre for Image Analysis at Uppsala University.
Supplied Product	Antibody pair set content: 1. Phospho-RPS6KB1 S424 rabbit polyclonal antibody (20 ul) In PBS, 150 mM NaCl, pH 7.4 (0.02% sodium azide, 50% glycerol) 2. RPS6KB1 mouse monoclonal antibody (40 ug) In 1x PBS, pH 7.2 *Reagents are sufficient for at least 30-50 assays using recommended protocols.
Storage Instruction	Store reagents of the antibody pair set at -20°C or lower. Please aliquot to avoid repeated freeze thaw cycle. Reagents should be returned to -20°C storage immediately after use.

Applications

- *In situ* Proximity Ligation Assay (Cell)

Gene Info — RPS6KB1

Entrez GeneID	6198
Gene Name	RPS6KB1
Gene Alias	PS6K, S6K, S6K1, STK14A, p70(S6K)-alpha, p70-S6K, p70-alpha
Gene Description	ribosomal protein S6 kinase, 70kDa, polypeptide 1
Omim ID	608938
Gene Ontology	Hyperlink
Gene Summary	This gene encodes a member of the RSK (ribosomal S6 kinase) family of serine/threonine kinase s. This kinase contains 2 non-identical kinase catalytic domains and phosphorylates several resid ues of the S6 ribosomal protein. The kinase activity of this protein leads to an increase in protein synthesis and cell proliferation. Amplification of the region of DNA encoding this gene and overex pression of this kinase are seen in some breast cancer cell lines. Alternate translational start sites have been described and alternate transcriptional splice variants have been observed but have n ot been thoroughly characterized. [provided by RefSeq]
Other Designations	p70 S6 kinase, alpha 1 p70 S6 kinase, alpha 2 ribosomal protein S6 kinase, 70kD, polypeptide 1 serine/threonine kinase 14 alpha

Pathway

- [Acute myeloid leukemia](#)
- [ErbB signaling pathway](#)
- [Fc gamma R-mediated phagocytosis](#)
- [Insulin signaling pathway](#)
- [mTOR signaling pathway](#)
- [TGF-beta signaling pathway](#)

Disease

- [Cardiovascular Diseases](#)
- [Diabetes Mellitus](#)
- [Edema](#)
- [Head and Neck Neoplasms](#)
- [Neoplasm Recurrence](#)
- [Neoplasms](#)