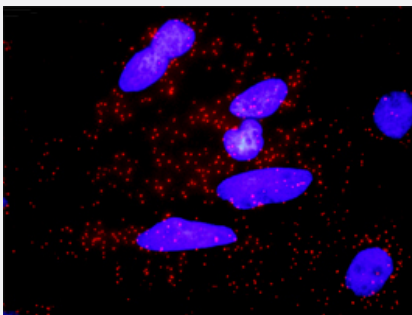


EIF4EBP1(phospho T45) & EIF4EBP1 Protein Phosphorylation Antibody Pair

Catalog # DP0209 Size 1 Set

Applications



Representative image of Proximity Ligation Assay of protein phosphorylation. HeLa cells were stained with dual recognition antibody pair set, rabbit polyclonal antibody 1:1200 and mouse monoclonal antibody 1:50. Each red dot represents one single phosphorylated protein. The images were analyzed using an optimized freeware (BlobFinder) download from The Centre for Image Analysis at Uppsala University.

Specification

Product Description	This protein phosphorylation antibody pair set comes with two antibodies, one against the EIF4EBP1 protein, and the other against the specific T45 phosphorylated site of EIF4EBP1 for use in in situ Proximity Ligation Assay . See Publication Reference below .
Reactivity	Human
Quality Control Testing	Dual recognition immunofluorescence result. Representative image of Proximity Ligation Assay of protein phosphorylation. HeLa cells were stained with dual recognition antibody pair set, rabbit polyclonal antibody 1:1200 and mouse monoclonal antibody 1:50. Each red dot represents one single phosphorylated protein. The images were analyzed using an optimized freeware (BlobFinder) download from The Centre for Image Analysis at Uppsala University.
Supplied Product	Antibody pair set content: 1. Phospho-EIF4EBP1 T45 rabbit polyclonal antibody (20 ul) In PBS, 150 mM NaCl, pH 7.4 (0.02% sodium azide, 50% glycerol) 2. EIF4EBP1 mouse monoclonal antibody (40 ug) In 1x PBS, pH 7.2 *Reagents are sufficient for at least 30-50 assays using recommended protocols.
Storage Instruction	Store reagents of the antibody pair set at -20°C or lower. Please aliquot to avoid repeated freeze thaw cycle. Reagents should be returned to -20°C storage immediately after use.

Applications

- *In situ* Proximity Ligation Assay (Cell)

Gene Info — EIF4EBP1

Entrez GeneID	1978
Gene Name	EIF4EBP1
Gene Alias	4E-BP1, 4EBP1, BP-1, MGC4316, PHAS-I
Gene Description	eukaryotic translation initiation factor 4E binding protein 1
Omim ID	602223
Gene Ontology	Hyperlink
Gene Summary	This gene encodes one member of a family of translation repressor proteins. The protein directly interacts with eukaryotic translation initiation factor 4E (eIF4E), which is a limiting component of the multisubunit complex that recruits 40S ribosomal subunits to the 5' end of mRNAs. Interaction of this protein with eIF4E inhibits complex assembly and represses translation. This protein is phosphorylated in response to various signals including UV irradiation and insulin signaling, resulting in its dissociation from eIF4E and activation of mRNA translation. [provided by RefSeq]
Other Designations	eIF4E-binding protein 1 phosphorylated heat- and acid-stable protein regulated by insulin 1

Pathway

- [Acute myeloid leukemia](#)
- [ErbB signaling pathway](#)
- [Insulin signaling pathway](#)
- [mTOR signaling pathway](#)

Disease

- [Alzheimer disease](#)
- [Genetic Predisposition to Disease](#)
- [Multiple System Atrophy](#)

- [Obesity](#)