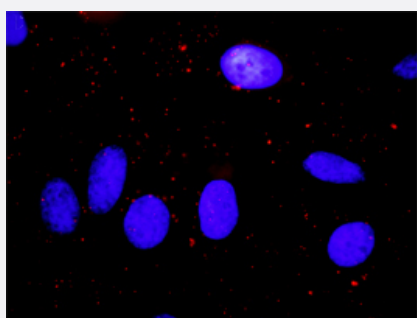


# RPS6KA1(phospho S352) & RPS6KA1 Protein Phosphorylation Antibody Pair

Catalog # DP0167      Size 1 Set

## Applications



Representative image of Proximity Ligation Assay of protein phosphorylation. HeLa cells were stained with dual recognition antibody pair set, rabbit polyclonal antibody 1:1200 and mouse monoclonal antibody 1:50. Each red dot represents one single phosphorylated protein. The images were analyzed using an optimized freeware (BlobFinder) download from The Centre for Image Analysis at Uppsala University.

## Specification

### Product Description

This protein phosphorylation antibody pair set comes with two antibodies, one against the RPS6KA1 protein, and the other against the specific S352 phosphorylated site of RPS6KA1 for use in [in situ Proximity Ligation Assay](#). [See Publication Reference below](#).

### Reactivity

Human

### Quality Control Testing

Dual recognition immunofluorescence result.  
Representative image of Proximity Ligation Assay of protein phosphorylation. HeLa cells were stained with dual recognition antibody pair set, rabbit polyclonal antibody 1:1200 and mouse monoclonal antibody 1:50. Each red dot represents one single phosphorylated protein. The images were analyzed using an optimized freeware (BlobFinder) download from The Centre for Image Analysis at Uppsala University.

### Supplied Product

Antibody pair set content:  
1. Phospho-RPS6KA1 S352 rabbit polyclonal antibody (20 ul)  
In PBS (without Mg<sup>2+</sup> and Ca<sup>2+</sup>), 150 mM NaCl, pH 7.4 (0.02% sodium azide, 50% glycerol)  
2. RPS6KA1 mouse monoclonal antibody (40 ug)  
In 1x PBS, pH 7.2  
\*Reagents are sufficient for at least 30-50 assays using recommended protocols.

### Storage Instruction

Store reagents of the antibody pair set at -20°C or lower. Please aliquot to avoid repeated freeze thaw cycle. Reagents should be returned to -20°C storage immediately after use.

## Applications

- *In situ* Proximity Ligation Assay (Cell)

## Gene Info — RPS6KA1

Entrez GeneID	<a href="#">6195</a>
Gene Name	RPS6KA1
Gene Alias	HU-1, MAPKAPK1A, RSK, RSK1
Gene Description	ribosomal protein S6 kinase, 90kDa, polypeptide 1
Omim ID	<a href="#">601684</a>
Gene Ontology	<a href="#">Hyperlink</a>
Gene Summary	This gene encodes a member of the RSK (ribosomal S6 kinase) family of serine/threonine kinase s. This kinase contains 2 nonidentical kinase catalytic domains and phosphorylates various substrates, including members of the mitogen-activated kinase (MAPK) signalling pathway. The activity of this protein has been implicated in controlling cell growth and differentiation. Alternate transcriptional splice variants, encoding different isoforms, have been characterized. [provided by RefSeq]
Other Designations	OTTHUMP00000004113 S6K-alpha 1 dJ590P13.1 (ribosomal protein S6 kinase, 90kD, polypeptide 1) p90-RSK 1 ribosomal protein S6 kinase alpha 1 ribosomal protein S6 kinase, 90kD, 1 ribosomal protein S6 kinase, 90kD, polypeptide 1

## Pathway

- [Long-term potentiation](#)
- [MAPK signaling pathway](#)
- [mTOR signaling pathway](#)
- [Neurotrophin signaling pathway](#)

## Disease

- [Breast cancer](#)
- [Breast Neoplasms](#)

- [Cardiovascular Diseases](#)
- [Diabetes Mellitus](#)
- [Edema](#)
- [Genetic Predisposition to Disease](#)
- [Kidney Failure](#)