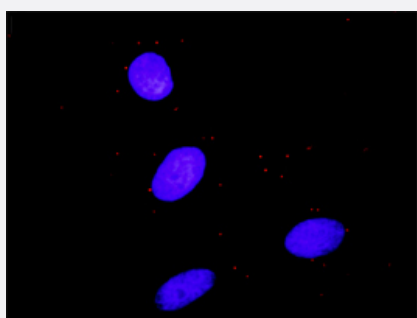


ELK1(phospho S389) & ELK1 Protein Phosphorylation Antibody Pair

Catalog # DP0145 Size 1 Set

Applications



Representative image of Proximity Ligation Assay of protein phosphorylation. HeLa cells were stained with dual recognition antibody pair set, rabbit polyclonal antibody 1:1200 and mouse monoclonal antibody 1:50. Each red dot represents one single phosphorylated protein. The images were analyzed using an optimized freeware (BlobFinder) download from The Centre for Image Analysis at Uppsala University.

Specification

Product Description

This protein phosphorylation antibody pair set comes with two antibodies, one against the ELK1 protein, and the other against the specific S389 phosphorylated site of ELK1 for use in [in situ Proximity Ligation Assay](#). [See Publication Reference below](#).

Reactivity

Human

Quality Control Testing

Dual recognition immunofluorescence result.
Representative image of Proximity Ligation Assay of protein phosphorylation. HeLa cells were stained with dual recognition antibody pair set, rabbit polyclonal antibody 1:1200 and mouse monoclonal antibody 1:50. Each red dot represents one single phosphorylated protein. The images were analyzed using an optimized freeware (BlobFinder) download from The Centre for Image Analysis at Uppsala University.

Supplied Product

Antibody pair set content:
1. Phospho-ELK1 S389 rabbit polyclonal antibody (20 ul)
In PBS, 150 mM NaCl, pH 7.4 (0.02% sodium azide, 50% glycerol)
2. ELK1 mouse monoclonal antibody (40 ug)
In 1x PBS, pH 7.2
*Reagents are sufficient for at least 30-50 assays using recommended protocols.

Storage Instruction

Store reagents of the antibody pair set at -20°C or lower. Please aliquot to avoid repeated freeze thaw cycle. Reagents should be returned to -20°C storage immediately after use.

Applications

- *In situ* Proximity Ligation Assay (Cell)

Gene Info — ELK1

Entrez GeneID	2002
Gene Name	ELK1
Gene Alias	-
Gene Description	ELK1, member of ETS oncogene family
Omim ID	311040
Gene Ontology	Hyperlink
Gene Summary	This gene is a member of the Ets family of transcription factors and of the ternary complex factor (TCF) subfamily. Proteins of the TCF subfamily form a ternary complex by binding to the the serum response factor and the serum reponse element in the promoter of the c-fos proto-oncogene. The protein encoded by this gene is a nuclear target for the ras-raf-MAPK signaling cascade. Alternatively spliced transcript variants encoding the same protein have been found for this gene. [provided by RefSeq]
Other Designations	ELK1 protein OTTHUMP00000023224 OTTHUMP00000023225

Pathway

- [Endometrial cancer](#)
- [ErbB signaling pathway](#)
- [Focal adhesion](#)
- [GnRH signaling pathway](#)
- [Insulin signaling pathway](#)
- [MAPK signaling pathway](#)
- [Prion diseases](#)

Disease

- [Cardiovascular Diseases](#)
- [Diabetes Mellitus](#)
- [Edema](#)