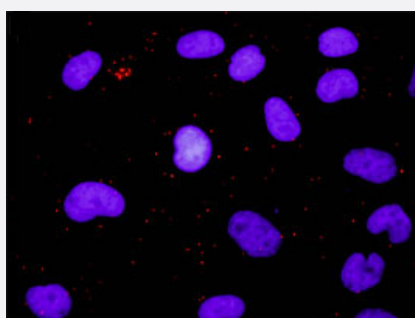


STAT5A(phospho Y694) & STAT5A Protein Phosphorylation Antibody Pair

Catalog # DP0117 Size 1 Set

Applications



Representative image of Proximity Ligation Assay of protein phosphorylation. HeLa cells were stained with dual recognition antibody pair set, rabbit purified polyclonal antibody 1:1200 and mouse monoclonal antibody 1:50. Each red dot represents one single phosphorylated protein. The images were analyzed using an optimized freeware (BlobFinder) download from The Centre for Image Analysis at Uppsala University.

Specification

Product Description

This protein phosphorylation antibody pair set comes with two antibodies, one against the STAT5A protein, and the other against the specific Y694 phosphorylated site of STAT5A for use in [in situ Proximity Ligation Assay](#). [See Publication Reference below](#).

Reactivity

Human

Quality Control Testing

Dual recognition immunofluorescence result.
Representative image of Proximity Ligation Assay of protein phosphorylation. HeLa cells were stained with dual recognition antibody pair set, rabbit purified polyclonal antibody 1:1200 and mouse monoclonal antibody 1:50. Each red dot represents one single phosphorylated protein. The images were analyzed using an optimized freeware (BlobFinder) download from The Centre for Image Analysis at Uppsala University.

Supplied Product

Antibody pair set content:
1. Phospho-STAT5A Y694 rabbit purified polyclonal antibody (20 ul)
With 0.09% sodium azide.
2. STAT5A mouse monoclonal antibody (40 ug)
In 1x PBS, pH 7.2
*Reagents are sufficient for at least 30-50 assays using recommended protocols.

Storage Instruction

Store reagents of the antibody pair set at -20°C or lower. Please aliquot to avoid repeated freeze thaw cycle. Reagents should be returned to -20°C storage immediately after use.

Applications

- *In situ* Proximity Ligation Assay (Cell)

Gene Info — STAT5A

Entrez GeneID [6776](#)

Gene Name STAT5A

Gene Alias MGF, STAT5

Gene Description signal transducer and activator of transcription 5A

Omim ID [601511](#)

Gene Ontology [Hyperlink](#)

Gene Summary

The protein encoded by this gene is a member of the STAT family of transcription factors. In response to cytokines and growth factors, STAT family members are phosphorylated by the receptor associated kinases, and then form homo- or heterodimers that translocate to the cell nucleus where they act as transcription activators. This protein is activated by, and mediates the responses of many cell ligands, such as IL2, IL3, IL7 GM-CSF, erythropoietin, thrombopoietin, and different growth hormones. Activation of this protein in myeloma and lymphoma associated with a TEL/JAK2 gene fusion is independent of cell stimulus and has been shown to be essential for the tumorigenesis. The mouse counterpart of this gene is found to induce the expression of BCL2L1/BCL-X(L), which suggests the antiapoptotic function of this gene in cells. [provided by RefSeq]

Other Designations -

Pathway

- [Acute myeloid leukemia](#)
- [Chronic myeloid leukemia](#)
- [ErbB signaling pathway](#)
- [Jak-STAT signaling pathway](#)
- [Pathways in cancer](#)

Disease

- [Asthma](#)
- [Birth Weight](#)
- [Breast cancer](#)
- [Breast Neoplasms](#)
- [Bronchiolitis](#)
- [Carcinoma](#)
- [Disease Progression](#)
- [Genetic Predisposition to Disease](#)
- [Glioblastoma](#)
- [Glioma](#)
- [Hepatitis C](#)
- [Infant](#)
- [Leukemia](#)
- [Liver Neoplasms](#)
- [Lupus Erythematosus](#)
- [Meningeal Neoplasms](#)
- [Meningioma](#)
- [Respiratory Syncytial Virus Infections](#)
- [Viremia](#)