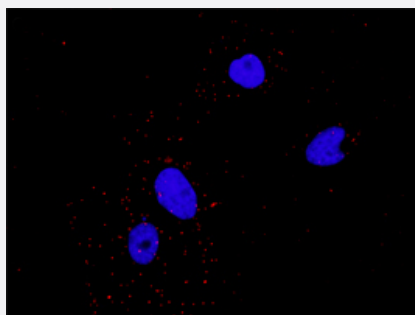


# BAD(phospho S99) & BAD Protein Phosphorylation Antibody Pair

Catalog # DP0094

Size 1 Set

## Applications



Representative image of Proximity Ligation Assay of protein phosphorylation. HeLa cells were stained with dual recognition antibody pair set, rabbit polyclonal antibody 1:1200 and mouse monoclonal antibody 1:50. Each red dot represents one single phosphorylated protein. The images were analyzed using an optimized freeware (BlobFinder) download from The Centre for Image Analysis at Uppsala University.

## Specification

### Product Description

This protein phosphorylation antibody pair set comes with two antibodies, one against the BAD protein, and the other against the specific S99 phosphorylated site of BAD for use in [in situ Proximity Ligation Assay](#). [See Publication Reference below](#).

### Reactivity

Human

### Quality Control Testing

Dual recognition immunofluorescence result.  
Representative image of Proximity Ligation Assay of protein phosphorylation. HeLa cells were stained with dual recognition antibody pair set, rabbit polyclonal antibody 1:1200 and mouse monoclonal antibody 1:50. Each red dot represents one single phosphorylated protein. The images were analyzed using an optimized freeware (BlobFinder) download from The Centre for Image Analysis at Uppsala University.

### Supplied Product

Antibody pair set content:  
1. Phospho-BAD S99 rabbit polyclonal antibody (20 ul)  
With 0.09% sodium azide.  
2. BAD mouse monoclonal antibody (40 ug)  
In 1x PBS, pH 7.2  
\*Reagents are sufficient for at least 30-50 assays using recommended protocols.

### Storage Instruction

Store reagents of the antibody pair set at -20°C or lower. Please aliquot to avoid repeated freeze thaw cycle. Reagents should be returned to -20°C storage immediately after use.

## Applications

- *In situ* Proximity Ligation Assay (Cell)

## Gene Info — BAD

Entrez GeneID	<a href="#">572</a>
Gene Name	BAD
Gene Alias	BBC2, BCL2L8
Gene Description	BCL2-associated agonist of cell death
Omim ID	<a href="#">603167</a>
Gene Ontology	<a href="#">Hyperlink</a>
Gene Summary	The protein encoded by this gene is a member of the BCL-2 family. BCL-2 family members are known to be regulators of programmed cell death. This protein positively regulates cell apoptosis by forming heterodimers with BCL-xL and BCL-2, and reversing their death repressor activity. Proapoptotic activity of this protein is regulated through its phosphorylation. Protein kinases AKT and MAP kinase, as well as protein phosphatase calcineurin were found to be involved in the regulation of this protein. Alternative splicing of this gene results in two transcript variants which encode the same isoform. [provided by RefSeq]
Other Designations	BCL-X/BCL-2 binding protein BCL2-antagonist of cell death protein BCL2-binding component 6 BCL2-binding protein

## Pathway

- [Acute myeloid leukemia](#)
- [Amyotrophic lateral sclerosis \(ALS\)](#)
- [Apoptosis](#)
- [Chronic myeloid leukemia](#)
- [Colorectal cancer](#)
- [Endometrial cancer](#)
- [ErbB signaling pathway](#)

- [Focal adhesion](#)
- [Insulin signaling pathway](#)
- [Melanoma](#)
- [Neurotrophin signaling pathway](#)
- [Non-small cell lung cancer](#)
- [Pancreatic cancer](#)
- [Pathways in cancer](#)
- [Prostate cancer](#)
- [VEGF signaling pathway](#)

## Disease

- [Cardiovascular Diseases](#)
- [Diabetes Mellitus](#)
- [Edema](#)
- [Genetic Predisposition to Disease](#)
- [Lymphoma](#)
- [Parkinson disease](#)
- [Thyroid Neoplasms](#)