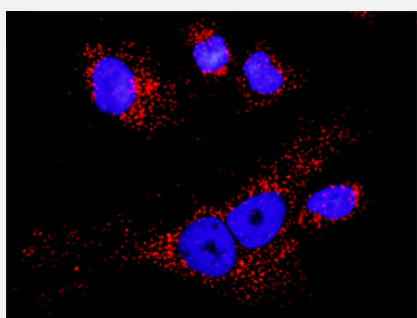


TWF1(phospho Y321) & TWF1 Protein Phosphorylation Antibody Pair

Catalog # DP0082 Size 1 Set

Applications



Representative image of Proximity Ligation Assay of protein phosphorylation. HeLa cells were stained with dual recognition antibody pair set, rabbit polyclonal antibody 1:1200 and mouse purified polyclonal antibody 1:50. Each red dot represents one single phosphorylated protein. The images were analyzed using an optimized freeware (BlobFinder) download from The Centre for Image Analysis at Uppsala University.

Specification

Product Description

This protein phosphorylation antibody pair set comes with two antibodies, one against the TWF1 protein, and the other against the specific Y321 phosphorylated site of TWF1 for use in [in situ Proximity Ligation Assay](#). [See Publication Reference below](#).

Reactivity

Human

Quality Control Testing

Dual recognition immunofluorescence result.
Representative image of Proximity Ligation Assay of protein phosphorylation. HeLa cells were stained with dual recognition antibody pair set, rabbit polyclonal antibody 1:1200 and mouse purified polyclonal antibody 1:50. Each red dot represents one single phosphorylated protein. The images were analyzed using an optimized freeware (BlobFinder) download from The Centre for Image Analysis at Uppsala University.

Supplied Product

Antibody pair set content:
1. Phospho-TWF1 Y321 rabbit polyclonal antibody (20 ul)
In PBS (0.09% (w/v) sodium azide)
2. TWF1 mouse purified polyclonal antibody (40 ug)
In 1x PBS, pH 7.2
*Reagents are sufficient for at least 30-50 assays using recommended protocols.

Storage Instruction

Store reagents of the antibody pair set at -20°C or lower. Please aliquot to avoid repeated freeze thaw cycle. Reagents should be returned to -20°C storage immediately after use.

Applications

- *In situ* Proximity Ligation Assay (Cell)

Gene Info — TWF1

Entrez GeneID	5756
Gene Name	TWF1
Gene Alias	A6, MGC23788, MGC41876, PTK9
Gene Description	twinfilin, actin-binding protein, homolog 1 (Drosophila)
Omim ID	610932
Gene Ontology	Hyperlink
Gene Summary	This gene encodes twinfilin, an actin monomer-binding protein conserved from yeast to mammals . Studies of the mouse counterpart suggest that this protein may be an actin monomer-binding protein, and its localization to cortical G-actin-rich structures may be regulated by the small GTPase RAC1. [provided by RefSeq
Other Designations	A6 protein tyrosine kinase PTK9 protein tyrosine kinase 9 protein tyrosine kinase 9 twinfilin 1

Disease

- [Birth Weight](#)
- [Genetic Predisposition to Disease](#)
- [Glioblastoma](#)
- [Glioma](#)
- [Leukemia](#)
- [Meningeal Neoplasms](#)
- [Meningioma](#)