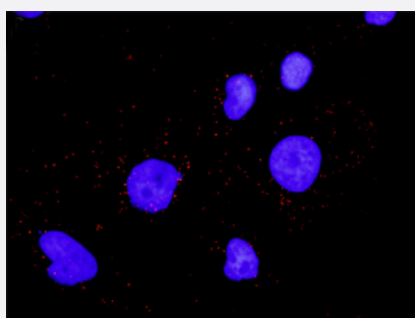


SLC29A4(phospho Y198) & SLC29A4 Protein Phosphorylation Antibody Pair

Catalog # DP0080 Size 1 Set

Applications



Representative image of Proximity Ligation Assay of protein phosphorylation. HeLa cells were stained with dual recognition antibody pair set, rabbit polyclonal antibody 1:1200 and mouse monoclonal antibody 1:50. Each red dot represents one single phosphorylated protein. The images were analyzed using an optimized freeware (BlobFinder) download from The Centre for Image Analysis at Uppsala University.

Specification

Product Description

This protein phosphorylation antibody pair set comes with two antibodies, one against the SLC29A4 protein, and the other against the specific Y198 phosphorylated site of SLC29A4 for use in [in situ Proximity Ligation Assay](#). [See Publication Reference below](#).

Reactivity

Human

Quality Control Testing

Dual recognition immunofluorescence result.
Representative image of Proximity Ligation Assay of protein phosphorylation. HeLa cells were stained with dual recognition antibody pair set, rabbit polyclonal antibody 1:1200 and mouse monoclonal antibody 1:50. Each red dot represents one single phosphorylated protein. The images were analyzed using an optimized freeware (BlobFinder) download from The Centre for Image Analysis at Uppsala University.

Supplied Product

Antibody pair set content:
1. Phospho-SLC29A4 Y198 rabbit polyclonal antibody (20 ul)
In PBS (0.09% (w/v) sodium azide)
2. SLC29A4 mouse monoclonal antibody (40 ug)
In 1x PBS, pH 7.2
*Reagents are sufficient for at least 30-50 assays using recommended protocols.

Storage Instruction

Store reagents of the antibody pair set at -20°C or lower. Please aliquot to avoid repeated freeze thaw cycle. Reagents should be returned to -20°C storage immediately after use.

Applications

- *In situ* Proximity Ligation Assay (Cell)

Gene Info — SLC29A4

| | |
|--------------------|--|
| Entrez GeneID | 222962 |
| Gene Name | SLC29A4 |
| Gene Alias | ENT4, FLJ34923, PMAT |
| Gene Description | solute carrier family 29 (nucleoside transporters), member 4 |
| Omim ID | 609149 |
| Gene Ontology | Hyperlink |
| Gene Summary | This gene is a member of the SLC29 family and encodes a plasma membrane protein with 11 transmembrane helices. This protein catalyzes the reuptake of monoamines into presynaptic neurons, thus determining the intensity and duration of monoamine neural signaling. It has been shown to transport several compounds, including serotonin, dopamine, and the neurotoxin 1-methyl-4-phenylpyridinium. Alternate transcriptional splice variants which encode the same protein have been characterized. [provided by RefSeq] |
| Other Designations | OTTHUMP00000025415 equilibrative nucleoside transporter 4 plasma membrane monoamine transporter |

Disease

- [Depressive Disorder](#)
- [Fatigue](#)
- [Sleep Disorders](#)
- [Sleep Initiation and Maintenance Disorders](#)