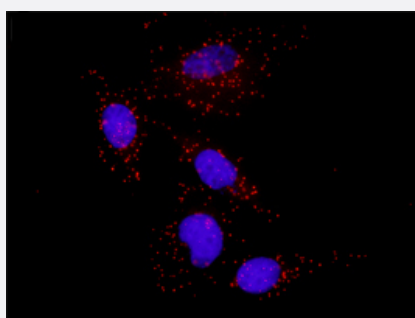


# MCAM(phospho Y641) & MCAM Protein Phosphorylation Antibody Pair

Catalog # DP0030      Size 1 Set

## Applications



Representative image of Proximity Ligation Assay of protein phosphorylation. HeLa cells were stained with dual recognition antibody pair set, rabbit polyclonal antibody 1:1200 and mouse purified polyclonal antibody 1:50. Each red dot represents one single phosphorylated protein. The images were analyzed using an optimized freeware (BlobFinder) download from The Centre for Image Analysis at Uppsala University.

## Specification

### Product Description

This protein phosphorylation antibody pair set comes with two antibodies, one against the MCAM protein, and the other against the specific Y641 phosphorylated site of MCAM for use in [in situ Proximity Ligation Assay](#). [See Publication Reference below](#).

### Reactivity

Human

### Quality Control Testing

Dual recognition immunofluorescence result.  
Representative image of Proximity Ligation Assay of protein phosphorylation. HeLa cells were stained with dual recognition antibody pair set, rabbit polyclonal antibody 1:1200 and mouse purified polyclonal antibody 1:50. Each red dot represents one single phosphorylated protein. The images were analyzed using an optimized freeware (BlobFinder) download from The Centre for Image Analysis at Uppsala University.

### Supplied Product

Antibody pair set content:  
1. Phospho-MCAM Y641 rabbit polyclonal antibody (20 ul)  
In PBS (0.09% (w/v) sodium azide)  
2. MCAM mouse purified polyclonal antibody (40 ug)  
No additive  
\*Reagents are sufficient for at least 30-50 assays using recommended protocols.

### Storage Instruction

Store reagents of the antibody pair set at -20°C or lower. Please aliquot to avoid repeated freeze thaw cycle. Reagents should be returned to -20°C storage immediately after use.

## Applications

- *In situ* Proximity Ligation Assay (Cell)

## Gene Info — MCAM

Entrez GeneID	<a href="#">4162</a>
Gene Name	MCAM
Gene Alias	CD146, MUC18
Gene Description	melanoma cell adhesion molecule
Omim ID	<a href="#">155735</a>
Gene Ontology	<a href="#">Hyperlink</a>
Other Designations	Gicerin melanoma adhesion molecule