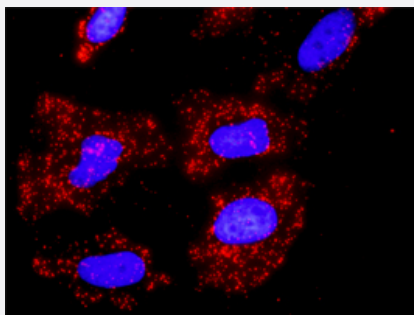


# CUL1 & FBXW11 Protein Protein Interaction Antibody Pair

Catalog # DI0619

Size 1 Set

## Applications



Representative image of Proximity Ligation Assay of protein-protein interactions between CUL1 and FBXW11. HeLa cells were stained with anti-CUL1 rabbit purified polyclonal antibody 1:1200 and anti-FBXW11 mouse monoclonal antibody 1:50. Each red dot represents the detection of protein-protein interaction complex. The images were analyzed using an optimized freeware (BlobFinder) download from The Centre for Image Analysis at Uppsala University.

## Specification

### Product Description

This protein protein interaction antibody pair set comes with two antibodies to detect the protein-protein interaction, one against the CUL1 protein, and the other against the FBXW11 protein for use in [in situ Proximity Ligation Assay](#). [See Publication Reference below](#).

### Reactivity

Human

### Quality Control Testing

Protein protein interaction immunofluorescence result.  
Representative image of Proximity Ligation Assay of protein-protein interactions between CUL1 and FBXW11. HeLa cells were stained with anti-CUL1 rabbit purified polyclonal antibody 1:1200 and anti-FBXW11 mouse monoclonal antibody 1:50. Each red dot represents the detection of protein-protein interaction complex. The images were analyzed using an optimized freeware (BlobFinder) download from The Centre for Image Analysis at Uppsala University.

### Supplied Product

Antibody pair set content:  
1. CUL1 rabbit purified polyclonal antibody (100 ug)  
2. FBXW11 mouse monoclonal antibody (40 ug)  
\*Reagents are sufficient for at least 30-50 assays using recommended protocols.

### Storage Instruction

Store reagents of the antibody pair set at -20°C or lower. Please aliquot to avoid repeated freeze-thaw cycle. Reagents should be returned to -20°C storage immediately after use.

## Applications

- *In situ* Proximity Ligation Assay (Cell)

## Gene Info — CUL1

Entrez GeneID	<a href="#">8454</a>
Gene Name	CUL1
Gene Alias	MGC149834, MGC149835
Gene Description	cullin 1
Omim ID	<a href="#">603134</a>
Gene Ontology	<a href="#">Hyperlink</a>
Other Designations	-

## Gene Info — FBXW11

Entrez GeneID	<a href="#">23291</a>
Gene Name	FBXW11
Gene Alias	BTRC2, BTRCP2, FBW1B, FBXW1B, Fbw11, Hos, KIAA0696
Gene Description	F-box and WD repeat domain containing 11
Omim ID	<a href="#">605651</a>
Gene Ontology	<a href="#">Hyperlink</a>
Gene Summary	<p>This gene encodes a member of the F-box protein family which is characterized by an approximately 40 amino acid motif, the F-box. The F-box proteins constitute one of the four subunits of ubiquitin protein ligase complex called SCFs (SKP1-cullin-F-box), which function in phosphorylation-dependent ubiquitination. The F-box proteins are divided into 3 classes: Fbws containing WD-40 domains, Fbls containing leucine-rich repeats, and Fbxs containing either different protein-protein interaction modules or no recognizable motifs. The protein encoded by this gene belongs to the Fbw s class and, in addition to an F-box, contains multiple WD40 repeats. This gene contains at least 14 exons, and its alternative splicing generates 3 transcript variants diverging at the presence/absence of two alternate exons. [provided by RefSeq]</p>
Other Designations	F-box and WD-40 domain protein 11 F-box and WD-40 domain protein 1B F-box protein Fbw1b beta-transducin repeat-containing protein 2

## Pathway

- [Cell cycle](#)
- [Hedgehog signaling pathway](#)
- [TGF-beta signaling pathway](#)
- [Ubiquitin mediated proteolysis](#)
- [Ubiquitin mediated proteolysis](#)
- [Wnt signaling pathway](#)
- [Wnt signaling pathway](#)

## Disease

- [Disease Progression](#)
- [Disease Susceptibility](#)
- [Genetic Predisposition to Disease](#)
- [HIV Infections](#)
- [Ovarian Neoplasms](#)
- [Tobacco Use Disorder](#)