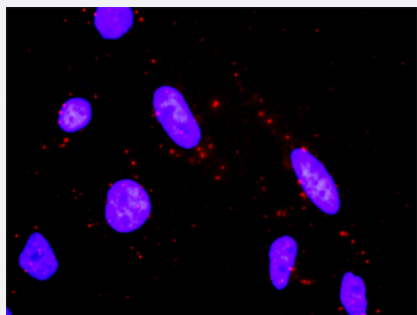


MAP2K3 & MAP2K6 Protein Protein Interaction Antibody Pair

Catalog # DI0532

Size 1 Set

Applications



Representative image of Proximity Ligation Assay of protein-protein interactions between MAP2K3 and MAP2K6. HeLa cells were stained with anti-MAP2K3 rabbit purified polyclonal antibody 1:1200 and anti-MAP2K6 mouse monoclonal antibody 1:50. Each red dot represents the detection of protein-protein interaction complex. The images were analyzed using an optimized freeware (BlobFinder) download from The Centre for Image Analysis at Uppsala University.

Specification

Product Description

This protein protein interaction antibody pair set comes with two antibodies to detect the protein-protein interaction, one against the MAP2K3 protein, and the other against the MAP2K6 protein for use in [in situ Proximity Ligation Assay](#). [See Publication Reference below](#).

Reactivity

Human

Quality Control Testing

Protein protein interaction immunofluorescence result.
Representative image of Proximity Ligation Assay of protein-protein interactions between MAP2K3 and MAP2K6. HeLa cells were stained with anti-MAP2K3 rabbit purified polyclonal antibody 1:1200 and anti-MAP2K6 mouse monoclonal antibody 1:50. Each red dot represents the detection of protein-protein interaction complex. The images were analyzed using an optimized freeware (BlobFinder) download from The Centre for Image Analysis at Uppsala University.

Supplied Product

Antibody pair set content:
1. MAP2K3 rabbit purified polyclonal antibody (100 ug)
2. MAP2K6 mouse monoclonal antibody (40 ug)
*Reagents are sufficient for at least 30-50 assays using recommended protocols.

Storage Instruction

Store reagents of the antibody pair set at -20°C or lower. Please aliquot to avoid repeated freeze-thaw cycle. Reagents should be returned to -20°C storage immediately after use.

Applications

- *In situ* Proximity Ligation Assay (Cell)

Gene Info — MAP2K3

Entrez GeneID [5606](#)

Gene Name MAP2K3

Gene Alias MAPKK3, MEK3, MKK3, PRKMK3

Gene Description mitogen-activated protein kinase kinase 3

Omim ID [602315](#)

Gene Ontology [Hyperlink](#)

Gene Summary

The protein encoded by this gene is a dual specificity protein kinase that belongs to the MAP kinase family. This kinase is activated by mitogenic and environmental stress, and participates in the MAP kinase-mediated signaling cascade. It phosphorylates and thus activates MAPK14/p38-MAPK. This kinase can be activated by insulin, and is necessary for the expression of glucose transporter. Expression of RAS oncogene is found to result in the accumulation of the active form of this kinase, which thus leads to the constitutive activation of MAPK14, and confers oncogenic transformation of primary cells. The inhibition of this kinase is involved in the pathogenesis of Yersinia pseudotuberculosis. Multiple alternatively spliced transcript variants that encode distinct isoforms have been reported for this gene. [provided by RefSeq]

Other Designations

MAP kinase kinase 3|MAPK/ERK kinase 3|OTTHUMP00000166044|dual specificity mitogen activated protein kinase kinase 3

Gene Info — MAP2K6

Entrez GeneID [5608](#)

Gene Name MAP2K6

Gene Alias MAPKK6, MEK6, MKK6, PRKMK6, SAPKK3

Gene Description mitogen-activated protein kinase kinase 6

Omim ID [601254](#)

Gene Ontology [Hyperlink](#)

Gene Summary

This gene encodes a member of the dual specificity protein kinase family, which functions as a mitogen-activated protein (MAP) kinase kinase. MAP kinases, also known as extracellular signal-regulated kinases (ERKs), act as an integration point for multiple biochemical signals. This protein phosphorylates and activates p38 MAP kinase in response to inflammatory cytokines or environmental stress. As an essential component of p38 MAP kinase mediated signal transduction pathway, this gene is involved in many cellular processes such as stress induced cell cycle arrest, transcription activation and apoptosis. [provided by RefSeq]

Other Designations

protein kinase, mitogen-activated, kinase 6 (MAP kinase kinase 6)

Pathway

- [Amyotrophic lateral sclerosis \(ALS\)](#)
- [Amyotrophic lateral sclerosis \(ALS\)](#)
- [Fc epsilon RI signaling pathway](#)
- [Fc epsilon RI signaling pathway](#)
- [GnRH signaling pathway](#)
- [GnRH signaling pathway](#)
- [MAPK signaling pathway](#)
- [MAPK signaling pathway](#)
- [Toll-like receptor signaling pathway](#)
- [Toll-like receptor signaling pathway](#)

Disease

- [Cardiovascular Diseases](#)
- [Diabetes Mellitus](#)
- [Edema](#)
- [Huntington disease](#)