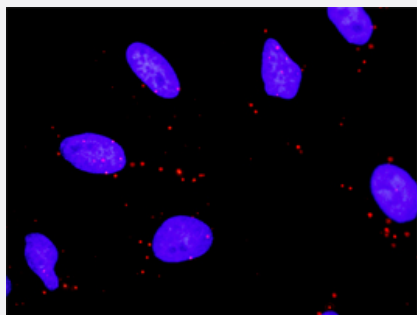


# MAP2K6 & TAOK2 Protein Protein Interaction Antibody Pair

Catalog # DI0515

Size 1 Set

## Applications



Representative image of Proximity Ligation Assay of protein-protein interactions between MAP2K6 and TAOK2. HeLa cells were stained with anti-MAP2K6 rabbit purified polyclonal antibody 1:1200 and anti-TAOK2 mouse monoclonal antibody 1:50. Each red dot represents the detection of protein-protein interaction complex. The images were analyzed using an optimized freeware (BlobFinder) download from The Centre for Image Analysis at Uppsala University.

## Specification

### Product Description

This protein protein interaction antibody pair set comes with two antibodies to detect the protein-protein interaction, one against the MAP2K6 protein, and the other against the TAOK2 protein for use in [in situ Proximity Ligation Assay](#). [See Publication Reference below](#).

### Reactivity

Human

### Quality Control Testing

Protein protein interaction immunofluorescence result.  
Representative image of Proximity Ligation Assay of protein-protein interactions between MAP2K6 and TAOK2. HeLa cells were stained with anti-MAP2K6 rabbit purified polyclonal antibody 1:1200 and anti-TAOK2 mouse monoclonal antibody 1:50. Each red dot represents the detection of protein-protein interaction complex. The images were analyzed using an optimized freeware (BlobFinder) download from The Centre for Image Analysis at Uppsala University.

### Supplied Product

Antibody pair set content:  
1. MAP2K6 rabbit purified polyclonal antibody (100 ug)  
2. TAOK2 mouse monoclonal antibody (40 ug)  
\*Reagents are sufficient for at least 30-50 assays using recommended protocols.

### Storage Instruction

Store reagents of the antibody pair set at -20°C or lower. Please aliquot to avoid repeated freeze-thaw cycle. Reagents should be returned to -20°C storage immediately after use.

## Applications

- *In situ* Proximity Ligation Assay (Cell)

## Gene Info — MAP2K6

Entrez GeneID [5608](#)

Gene Name MAP2K6

Gene Alias MAPKK6, MEK6, MKK6, PRKMK6, SAPKK3

Gene Description mitogen-activated protein kinase kinase 6

Omim ID [601254](#)

Gene Ontology [Hyperlink](#)

**Gene Summary** This gene encodes a member of the dual specificity protein kinase family, which functions as a mitogen-activated protein (MAP) kinase kinase. MAP kinases, also known as extracellular signal-regulated kinases (ERKs), act as an integration point for multiple biochemical signals. This protein phosphorylates and activates p38 MAP kinase in response to inflammatory cytokines or environmental stress. As an essential component of p38 MAP kinase mediated signal transduction pathway, this gene is involved in many cellular processes such as stress induced cell cycle arrest, transcription activation and apoptosis. [provided by RefSeq]

**Other Designations** protein kinase, mitogen-activated, kinase 6 (MAP kinase kinase 6)

## Gene Info — TAOK2

Entrez GeneID [9344](#)

Gene Name TAOK2

Gene Alias KIAA0881, MAP3K17, PSK, PSK1, TAO1, TAO2

Gene Description TAO kinase 2

Gene Ontology [Hyperlink](#)

**Other Designations** prostate derived STE20-like kinase PSK|thousand and one amino acid protein kinase

## Pathway

- [Amyotrophic lateral sclerosis \(ALS\)](#)
- [Ec epsilon RI signaling pathway](#)
- [GnRH signaling pathway](#)
- [MAPK signaling pathway](#)
- [MAPK signaling pathway](#)
- [Toll-like receptor signaling pathway](#)

## Disease

- [Autistic Disorder](#)
- [Cardiovascular Diseases](#)
- [Diabetes Mellitus](#)
- [Edema](#)
- [Genetic Predisposition to Disease](#)
- [Huntington disease](#)