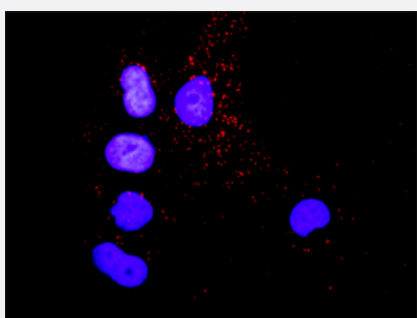


# CRK & SHC1 Protein Protein Interaction Antibody Pair

Catalog # DI0401

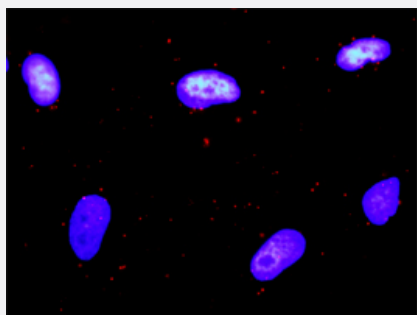
Size 1 Set

## Applications



### *In situ* Proximity Ligation Assay (Cell)

Representative image of Proximity Ligation Assay of protein-protein interactions between CRK and SHC1. Mahlavu cells were stained with anti-CRK rabbit purified polyclonal antibody 1:1200 and anti-SHC1 mouse monoclonal antibody 1:50. Each red dot represents the detection of protein-protein interaction complex, and nuclei were counterstained with DAPI (blue).



Representative image of Proximity Ligation Assay of protein-protein interactions between CRK and SHC1. HeLa cells were stained with anti-CRK rabbit purified polyclonal antibody 1:1200 and anti-SHC1 mouse monoclonal antibody 1:50. Each red dot represents the detection of protein-protein interaction complex. The images were analyzed using an optimized freeware (BlobFinder) download from The Centre for Image Analysis at Uppsala University.

## Specification

### Product Description

This protein protein interaction antibody pair set comes with two antibodies to detect the protein-protein interaction, one against the CRK protein, and the other against the SHC1 protein for use in [in situ Proximity Ligation Assay](#). [See Publication Reference below](#).

### Reactivity

Human

### Quality Control Testing

Protein protein interaction immunofluorescence result.  
Representative image of Proximity Ligation Assay of protein-protein interactions between CRK and SHC1. HeLa cells were stained with anti-CRK rabbit purified polyclonal antibody 1:1200 and anti-SHC1 mouse monoclonal antibody 1:50. Each red dot represents the detection of protein-protein interaction complex. The images were analyzed using an optimized freeware (BlobFinder) download from The Centre for Image Analysis at Uppsala University.

**Supplied Product**

Antibody pair set content:

1. CRK rabbit purified polyclonal antibody (100 ug)
2. SHC1 mouse monoclonal antibody (40 ug)

\*Reagents are sufficient for at least 30-50 assays using recommended protocols.

**Storage Instruction**

Store reagents of the antibody pair set at -20°C or lower. Please aliquot to avoid repeated freeze thaw cycle. Reagents should be returned to -20°C storage immediately after use.

## Applications

- *In situ* Proximity Ligation Assay (Cell)

Representative image of Proximity Ligation Assay of protein-protein interactions between CRK and SHC1. Mahlavu cells were stained with anti-CRK rabbit purified polyclonal antibody 1:1200 and anti-SHC1 mouse monoclonal antibody 1:50. Each red dot represents the detection of protein-protein interaction complex, and nuclei were counterstained with DAPI (blue).

## Gene Info — CRK

**Entrez GeneID**[1398](#)**Gene Name**

CRK

**Gene Alias**

CRKII

**Gene Description**

v-crk sarcoma virus CT10 oncogene homolog (avian)

**Omim ID**[164762](#)**Gene Ontology**[Hyperlink](#)**Gene Summary**

This gene encodes a member of an adapter protein family that binds to several tyrosine-phosphorylated proteins. The product of this gene has several SH2 and SH3 domains (src-homology domains) and is involved in several signaling pathways, recruiting cytoplasmic proteins in the vicinity of tyrosine kinase through SH2-phosphotyrosine interaction. The N-terminal SH2 domain of this protein functions as a positive regulator of transformation whereas the C-terminal SH3 domain functions as a negative regulator of transformation. Two alternative transcripts encoding different isoforms with distinct biological activity have been described. [provided by RefSeq]

**Other Designations**

avian sarcoma virus CT10 (v-crk) oncogene homolog|v-crk avian sarcoma virus CT10 oncogene homolog|v-crk sarcoma virus CT10 oncogene homolog

## Gene Info — SHC1

**Entrez GeneID**[6464](#)

Gene Name	SHC1
Gene Alias	FLJ26504, SHC, SHCA
Gene Description	SHC (Src homology 2 domain containing) transforming protein 1
Omim ID	<a href="#">600560</a>
Gene Ontology	<a href="#">Hyperlink</a>
Other Designations	OTTHUMP00000035409 OTTHUMP00000035471 SHC (Src homology 2 domain-containing) transforming protein 1 SHC-transforming protein 1

## Pathway

- [Chemokine signaling pathway](#)
- [Chemokine signaling pathway](#)
- [Chronic myeloid leukemia](#)
- [Chronic myeloid leukemia](#)
- [ErbB signaling pathway](#)
- [ErbB signaling pathway](#)
- [Fc gamma R-mediated phagocytosis](#)
- [Focal adhesion](#)
- [Focal adhesion](#)
- [Glioma](#)
- [Insulin signaling pathway](#)
- [Insulin signaling pathway](#)
- [MAPK signaling pathway](#)
- [Natural killer cell mediated cytotoxicity](#)
- [Neurotrophin signaling pathway](#)
- [Neurotrophin signaling pathway](#)
- [Pathways in cancer](#)

- [Regulation of actin cytoskeleton](#)
- [Renal cell carcinoma](#)

## Disease

- [Breast cancer](#)
- [Breast Neoplasms](#)
- [Genetic Predisposition to Disease](#)
- [Obesity](#)
- [Tobacco Use Disorder](#)