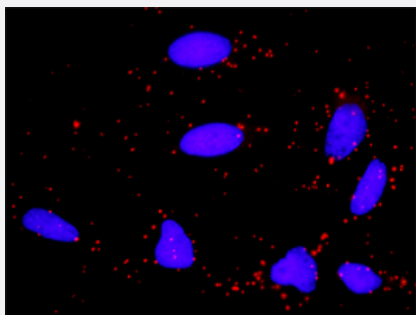


SYK & HCLS1 Protein Protein Interaction Antibody Pair

Catalog # DI0227

Size 1 Set

Applications



Representative image of Proximity Ligation Assay of protein-protein interactions between SYK and HCLS1. HeLa cells were stained with anti-SYK rabbit purified polyclonal antibody 1:1200 and anti-HCLS1 mouse monoclonal antibody 1:50. Each red dot represents the detection of protein-protein interaction complex. The images were analyzed using an optimized freeware (BlobFinder) download from The Centre for Image Analysis at Uppsala University.

Specification

Product Description

This protein protein interaction antibody pair set comes with two antibodies to detect the protein-protein interaction, one against the SYK protein, and the other against the HCLS1 protein for use in [in situ Proximity Ligation Assay](#). [See Publication Reference below](#).

Reactivity

Human

Quality Control Testing

Protein protein interaction immunofluorescence result.
Representative image of Proximity Ligation Assay of protein-protein interactions between SYK and HCLS1. HeLa cells were stained with anti-SYK rabbit purified polyclonal antibody 1:1200 and anti-HCLS1 mouse monoclonal antibody 1:50. Each red dot represents the detection of protein-protein interaction complex. The images were analyzed using an optimized freeware (BlobFinder) download from The Centre for Image Analysis at Uppsala University.

Supplied Product

Antibody pair set content:
1. SYK rabbit purified polyclonal antibody (100 ug)
2. HCLS1 mouse monoclonal antibody (40 ug)
*Reagents are sufficient for at least 30-50 assays using recommended protocols.

Storage Instruction

Store reagents of the antibody pair set at -20°C or lower. Please aliquot to avoid repeated freeze-thaw cycle. Reagents should be returned to -20°C storage immediately after use.

Applications

- *In situ* Proximity Ligation Assay (Cell)

Gene Info — HCLS1

Entrez GeneID	3059
Gene Name	HCLS1
Gene Alias	CTTNL, HS1
Gene Description	hematopoietic cell-specific Lyn substrate 1
Omim ID	601306
Gene Ontology	Hyperlink
Other Designations	cortactin-like

Gene Info — SYK

Entrez GeneID	6850
Gene Name	SYK
Gene Alias	DKFZp313N1010, FLJ25043, FLJ37489
Gene Description	spleen tyrosine kinase
Omim ID	600085
Gene Ontology	Hyperlink
Other Designations	OTTHUMP00000021627 OTTHUMP00000021628

Pathway

- [B cell receptor signaling pathway](#)
- [Fc epsilon RI signaling pathway](#)
- [Fc gamma R-mediated phagocytosis](#)

- [Natural killer cell mediated cytotoxicity](#)
- [Pathogenic Escherichia coli infection - EHEC](#)
- [Tight junction](#)

Disease

- [Kidney Failure](#)
- [Lupus Erythematosus](#)
- [Lymphedema](#)
- [Lymphoproliferative Disorders](#)
- [Myelodysplastic Syndromes](#)
- [Tobacco Use Disorder](#)