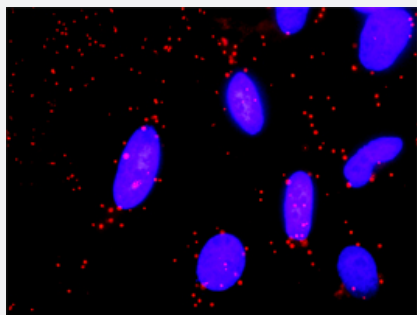


SMURF1 & GNG11 Protein Protein Interaction Antibody Pair

Catalog # DI0223

Size 1 Set

Applications



Representative image of Proximity Ligation Assay of protein-protein interactions between SMURF1 and GNG11. HeLa cells were stained with anti-SMURF1 rabbit purified polyclonal antibody 1:1200 and anti-GNG11 mouse monoclonal antibody 1:50. Each red dot represents the detection of protein-protein interaction complex. The images were analyzed using an optimized freeware (BlobFinder) download from The Centre for Image Analysis at Uppsala University.

Specification

Product Description

This protein protein interaction antibody pair set comes with two antibodies to detect the protein-protein interaction, one against the SMURF1 protein, and the other against the GNG11 protein for use in [in situ Proximity Ligation Assay](#). [See Publication Reference below](#).

Reactivity

Human

Quality Control Testing

Protein protein interaction immunofluorescence result.
Representative image of Proximity Ligation Assay of protein-protein interactions between SMURF1 and GNG11. HeLa cells were stained with anti-SMURF1 rabbit purified polyclonal antibody 1:1200 and anti-GNG11 mouse monoclonal antibody 1:50. Each red dot represents the detection of protein-protein interaction complex. The images were analyzed using an optimized freeware (BlobFinder) download from The Centre for Image Analysis at Uppsala University.

Supplied Product

Antibody pair set content:
1. SMURF1 rabbit purified polyclonal antibody (100 ug)
2. GNG11 mouse monoclonal antibody (40 ug)
*Reagents are sufficient for at least 30-50 assays using recommended protocols.

Storage Instruction

Store reagents of the antibody pair set at -20°C or lower. Please aliquot to avoid repeated freeze-thaw cycle. Reagents should be returned to -20°C storage immediately after use.

Applications

- *In situ* Proximity Ligation Assay (Cell)

Gene Info — GNG11

Entrez GeneID	2791
Gene Name	GNG11
Gene Alias	GNGT11
Gene Description	guanine nucleotide binding protein (G protein), gamma 11
Omim ID	604390
Gene Ontology	Hyperlink
Gene Summary	This gene is a member of the guanine nucleotide-binding protein (G protein) gamma family and encodes a lipid-anchored, cell membrane protein. As a member of the heterotrimeric G protein complex, this protein plays a role in this transmembrane signaling system. This protein is also subject to carboxyl-terminal processing. Decreased expression of this gene is associated with splenic marginal zone lymphomas. [provided by RefSeq]
Other Designations	G protein gamma-11 subunit guanine nucleotide binding protein gamma 11 guanine nucleotide-binding protein G(I)/G(S)/G(O) gamma-11 subunit

Gene Info — SMURF1

Entrez GeneID	57154
Gene Name	SMURF1
Gene Alias	KIAA1625
Gene Description	SMAD specific E3 ubiquitin protein ligase 1
Omim ID	605568
Gene Ontology	Hyperlink
Gene Summary	This gene encodes a ubiquitin ligase that is specific for receptor-regulated SMAD proteins in the bone morphogenetic protein (BMP) pathway. A similar protein in <i>Xenopus</i> is involved in embryonic pattern formation. Alternative splicing results in multiple transcript variants encoding different isoforms. An additional transcript variant has been identified, but its full length sequence has not been determined. [provided by RefSeq]

Other Designations

E3 ubiquitin ligase SMURF1|Smad ubiquitination regulatory factor 1|Smad-specific E3 ubiquitin ligase 1

Pathway

- [Chemokine signaling pathway](#)
- [Endocytosis](#)
- [TGF-beta signaling pathway](#)
- [Ubiquitin mediated proteolysis](#)