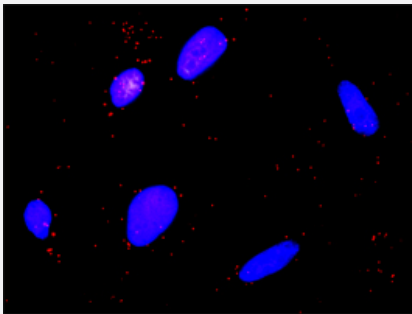


CAPN1 & F2R Protein Protein Interaction Antibody Pair

Catalog # DI0177

Size 1 Set

Applications



Representative image of Proximity Ligation Assay of protein-protein interactions between CAPN1 and F2R. HeLa cells were stained with anti-CAPN1 rabbit purified polyclonal antibody 1:1200 and anti-F2R mouse monoclonal antibody 1:50. Each red dot represents the detection of protein-protein interaction complex. The images were analyzed using an optimized freeware (BlobFinder) download from The Centre for Image Analysis at Uppsala University.

Specification

Product Description

This protein protein interaction antibody pair set comes with two antibodies to detect the protein-protein interaction, one against the CAPN1 protein, and the other against the F2R protein for use in [in situ Proximity Ligation Assay](#). [See Publication Reference below](#).

Reactivity

Human

Quality Control Testing

Protein protein interaction immunofluorescence result.
Representative image of Proximity Ligation Assay of protein-protein interactions between CAPN1 and F2R. HeLa cells were stained with anti-CAPN1 rabbit purified polyclonal antibody 1:1200 and anti-F2R mouse monoclonal antibody 1:50. Each red dot represents the detection of protein-protein interaction complex. The images were analyzed using an optimized freeware (BlobFinder) download from The Centre for Image Analysis at Uppsala University.

Supplied Product

Antibody pair set content:
1. CAPN1 rabbit purified polyclonal antibody (100 ug)
2. F2R mouse monoclonal antibody (40 ug)
*Reagents are sufficient for at least 30-50 assays using recommended protocols.

Storage Instruction

Store reagents of the antibody pair set at -20°C or lower. Please aliquot to avoid repeated freeze-thaw cycle. Reagents should be returned to -20°C storage immediately after use.

Applications

- *In situ* Proximity Ligation Assay (Cell)

Gene Info — CAPN1

Entrez GeneID	823
Gene Name	CAPN1
Gene Alias	CANP, CANP1, CANPL1, muCANP, muCL
Gene Description	calpain 1, (mu/l) large subunit
Omim ID	114220
Gene Ontology	Hyperlink
Gene Summary	The calpains, calcium-activated neutral proteases, are nonlysosomal, intracellular cysteine proteases. The mammalian calpains include ubiquitous, stomach-specific, and muscle-specific proteins. The ubiquitous enzymes consist of heterodimers with distinct large, catalytic subunits associated with a common small, regulatory subunit. This gene encodes the large subunit of the ubiquitous enzyme, calpain 1. [provided by RefSeq]
Other Designations	calcium-activated neutral proteinase calpain 1, large subunit calpain, large polypeptide L1 cell proliferation-inducing protein 30

Gene Info — F2R

Entrez GeneID	2149
Gene Name	F2R
Gene Alias	CF2R, HTR, PAR1, TR
Gene Description	coagulation factor II (thrombin) receptor
Omim ID	187930
Gene Ontology	Hyperlink
Gene Summary	Coagulation factor II receptor is a 7-transmembrane receptor involved in the regulation of thrombotic response. Proteolytic cleavage leads to the activation of the receptor. F2R is a G-protein coupled receptor family member. [provided by RefSeq]
Other Designations	coagulation factor II receptor protease-activated receptor 1 thrombin receptor

Pathway

- [Apoptosis](#)
- [Calcium signaling pathway](#)
- [Complement and coagulation cascades](#)
- [Endocytosis](#)
- [Neuroactive ligand-receptor interaction](#)
- [Regulation of actin cytoskeleton](#)

Disease

- [Asthma](#)
- [Cardiovascular Diseases](#)
- [Coronary Disease](#)
- [Diabetes Mellitus](#)
- [Edema](#)
- [Genetic Predisposition to Disease](#)
- [Hypertension](#)
- [Myocardial Infarction](#)
- [Premature Birth](#)