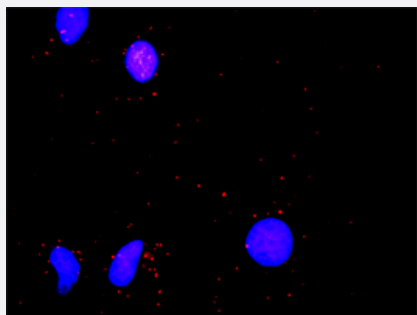


ACTN1 & CTNNA1 Protein Protein Interaction Antibody Pair

Catalog # DI0141

Size 1 Set

Applications



Representative image of Proximity Ligation Assay of protein-protein interactions between ACTN1 and CTNNA1. HeLa cells were stained with anti-ACTN1 rabbit purified polyclonal antibody 1:1200 and anti-CTNNA1 mouse monoclonal antibody 1:50. Each red dot represents the detection of protein-protein interaction complex. The images were analyzed using an optimized freeware (BlobFinder) download from The Centre for Image Analysis at Uppsala University.

Specification

Product Description

This protein protein interaction antibody pair set comes with two antibodies to detect the protein-protein interaction, one against the ACTN1 protein, and the other against the CTNNA1 protein for use in [in situ Proximity Ligation Assay](#). [See Publication Reference below](#).

Reactivity

Human

Quality Control Testing

Protein protein interaction immunofluorescence result.
Representative image of Proximity Ligation Assay of protein-protein interactions between ACTN1 and CTNNA1. HeLa cells were stained with anti-ACTN1 rabbit purified polyclonal antibody 1:1200 and anti-CTNNA1 mouse monoclonal antibody 1:50. Each red dot represents the detection of protein-protein interaction complex. The images were analyzed using an optimized freeware (BlobFinder) download from The Centre for Image Analysis at Uppsala University.

Supplied Product

Antibody pair set content:
1. ACTN1 rabbit purified polyclonal antibody (100 ug)
2. CTNNA1 mouse monoclonal antibody (40 ug)
*Reagents are sufficient for at least 30-50 assays using recommended protocols.

Storage Instruction

Store reagents of the antibody pair set at -20°C or lower. Please aliquot to avoid repeated freeze-thaw cycle. Reagents should be returned to -20°C storage immediately after use.

Applications

- *In situ* Proximity Ligation Assay (Cell)

Gene Info — ACTN1

Entrez GeneID [87](#)

Gene Name ACTN1

Gene Alias FLJ40884

Gene Description actinin, alpha 1

Omim ID [102575](#)

Gene Ontology [Hyperlink](#)

Gene Summary Alpha actinins belong to the spectrin gene superfamily which represents a diverse group of cytoskeletal proteins, including the alpha and beta spectrins and dystrophins. Alpha actinin is an actin-binding protein with multiple roles in different cell types. In nonmuscle cells, the cytoskeletal isoform is found along microfilament bundles and adherens-type junctions, where it is involved in binding actin to the membrane. In contrast, skeletal, cardiac, and smooth muscle isoforms are localized to the Z-disc and analogous dense bodies, where they help anchor the myofibrillar actin filaments. This gene encodes a nonmuscle, cytoskeletal, alpha actinin isoform and maps to the same site as the structurally similar erythroid beta spectrin gene. Three transcript variants encoding different isoforms have been found for this gene. [provided by RefSeq]

Other Designations F-actin cross-linking protein|actinin 1 smooth muscle|alpha-actinin 1

Gene Info — CTNNA1

Entrez GeneID [1495](#)

Gene Name CTNNA1

Gene Alias CAP102, FLJ36832

Gene Description catenin (cadherin-associated protein), alpha 1, 102kDa

Omim ID [116805](#)

Gene Ontology [Hyperlink](#)

Gene Summary alpha 1

Other Designations

alpha-E-catenin|alpha-catenin|alphaE-catenin|cadherin-associated protein,102kDa|catenin (cadherin-associated protein), alpha 1 (102kD)|catenin, alpha 1

Pathway

- [Adherens junction](#)
- [Adherens junction](#)
- [Arrhythmogenic right ventricular cardiomyopathy \(ARVC\)](#)
- [Arrhythmogenic right ventricular cardiomyopathy \(ARVC\)](#)
- [Endometrial cancer](#)
- [Focal adhesion](#)
- [Leukocyte transendothelial migration](#)
- [Leukocyte transendothelial migration](#)
- [Pathways in cancer](#)
- [Regulation of actin cytoskeleton](#)
- [Systemic lupus erythematosus](#)
- [Tight junction](#)
- [Tight junction](#)

Disease

- [Cardiovascular Diseases](#)
- [Cleft Lip](#)
- [Cleft Palate](#)
- [Diabetes Mellitus](#)
- [Edema](#)