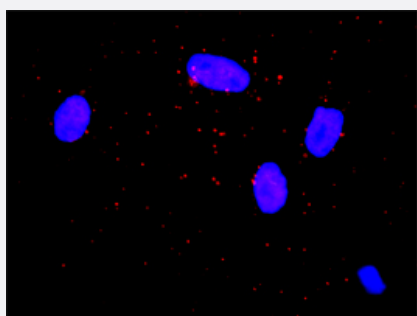


JUP & CTNNA1 Protein Protein Interaction Antibody Pair

Catalog # DI0140

Size 1 Set

Applications



Representative image of Proximity Ligation Assay of protein-protein interactions between JUP and CTNNA1. HeLa cells were stained with anti-JUP rabbit purified polyclonal antibody 1:1200 and anti-CTNNA1 mouse monoclonal antibody 1:50. Each red dot represents the detection of protein-protein interaction complex. The images were analyzed using an optimized freeware (BlobFinder) download from The Centre for Image Analysis at Uppsala University.

Specification

Product Description

This protein protein interaction antibody pair set comes with two antibodies to detect the protein-protein interaction, one against the JUP protein, and the other against the CTNNA1 protein for use in [in situ Proximity Ligation Assay](#). [See Publication Reference below](#).

Reactivity

Human

Quality Control Testing

Protein protein interaction immunofluorescence result.
Representative image of Proximity Ligation Assay of protein-protein interactions between JUP and CTNNA1. HeLa cells were stained with anti-JUP rabbit purified polyclonal antibody 1:1200 and anti-CTNNA1 mouse monoclonal antibody 1:50. Each red dot represents the detection of protein-protein interaction complex. The images were analyzed using an optimized freeware (BlobFinder) download from The Centre for Image Analysis at Uppsala University.

Supplied Product

Antibody pair set content:
1. JUP rabbit purified polyclonal antibody (100 ug)
2. CTNNA1 mouse monoclonal antibody (40 ug)
*Reagents are sufficient for at least 30-50 assays using recommended protocols.

Storage Instruction

Store reagents of the antibody pair set at -20°C or lower. Please aliquot to avoid repeated freeze-thaw cycle. Reagents should be returned to -20°C storage immediately after use.

Applications

- *In situ* Proximity Ligation Assay (Cell)

Gene Info — CTNNA1

Entrez GeneID	1495
Gene Name	CTNNA1
Gene Alias	CAP102, FLJ36832
Gene Description	catenin (cadherin-associated protein), alpha 1, 102kDa
Omim ID	116805
Gene Ontology	Hyperlink
Gene Summary	alpha 1
Other Designations	alpha-E-catenin alpha-catenin alphaE-catenin cadherin-associated protein,102kDa catenin (cadherin-associated protein), alpha 1 (102kD) catenin, alpha 1

Gene Info — JUP

Entrez GeneID	3728
Gene Name	JUP
Gene Alias	ARVD12, CTNNG, DP3, DPIII, PDGB, PKGB
Gene Description	junction plakoglobin
Omim ID	173325 601214
Gene Ontology	Hyperlink
Gene Summary	This gene encodes a major cytoplasmic protein which is the only known constituent common to submembranous plaques of both desmosomes and intermediate junctions. This protein forms distinct complexes with cadherins and desmosomal cadherins and is a member of the catenin family since it contains a distinct repeating amino acid motif called the armadillo repeat. Mutation in this gene has been associated with Naxos disease. Alternative splicing occurs in this gene; however, not all transcripts have been fully described. [provided by RefSeq]
Other Designations	OTTHUMP00000164735 catenin (cadherin-associated protein), gamma (80kD) catenin (cadherin-associated protein), gamma 80kDa gamma-catenin

Pathway

- [Acute myeloid leukemia](#)
- [Adherens junction](#)
- [Arrhythmogenic right ventricular cardiomyopathy \(ARVC\)](#)
- [Arrhythmogenic right ventricular cardiomyopathy \(ARVC\)](#)
- [Endometrial cancer](#)
- [Leukocyte transendothelial migration](#)
- [Pathways in cancer](#)
- [Pathways in cancer](#)
- [Tight junction](#)

Disease

- [Arrhythmias](#)
- [Arrhythmogenic Right Ventricular Dysplasia](#)
- [Cardiovascular Diseases](#)
- [Diabetes Mellitus](#)
- [Edema](#)
- [Genetic Predisposition to Disease](#)