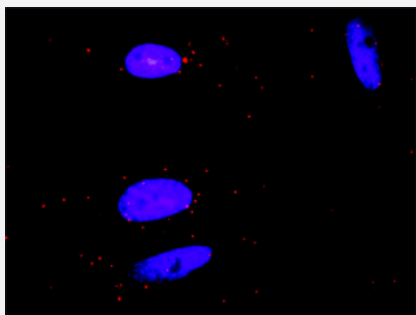


GRAP2 & CSF1R Protein Protein Interaction Antibody Pair

Catalog # DI0107

Size 1 Set

Applications



Representative image of Proximity Ligation Assay of protein-protein interactions between GRAP2 and CSF1R. HeLa cells were stained with anti-GRAP2 rabbit purified polyclonal antibody 1:1200 and anti-CSF1R mouse monoclonal antibody 1:50. Each red dot represents the detection of protein-protein interaction complex. The images were analyzed using an optimized freeware (BlobFinder) download from The Centre for Image Analysis at Uppsala University.

Specification

Product Description

This protein protein interaction antibody pair set comes with two antibodies to detect the protein-protein interaction, one against the GRAP2 protein, and the other against the CSF1R protein for use in [in situ Proximity Ligation Assay](#). [See Publication Reference below](#).

Reactivity

Human

Quality Control Testing

Protein protein interaction immunofluorescence result.
Representative image of Proximity Ligation Assay of protein-protein interactions between GRAP2 and CSF1R. HeLa cells were stained with anti-GRAP2 rabbit purified polyclonal antibody 1:1200 and anti-CSF1R mouse monoclonal antibody 1:50. Each red dot represents the detection of protein-protein interaction complex. The images were analyzed using an optimized freeware (BlobFinder) download from The Centre for Image Analysis at Uppsala University.

Supplied Product

Antibody pair set content:
1. GRAP2 rabbit purified polyclonal antibody (100 ug)
2. CSF1R mouse monoclonal antibody (40 ug)
*Reagents are sufficient for at least 30-50 assays using recommended protocols.

Storage Instruction

Store reagents of the antibody pair set at -20°C or lower. Please aliquot to avoid repeated freeze-thaw cycle. Reagents should be returned to -20°C storage immediately after use.

Applications

- *In situ* Proximity Ligation Assay (Cell)

Gene Info — CSF1R

Entrez GeneID [1436](#)

Gene Name CSF1R

Gene Alias C-FMS, CD115, CSFR, FIM2, FMS

Gene Description colony stimulating factor 1 receptor

Omim ID [164770](#)

Gene Ontology [Hyperlink](#)

Gene Summary The protein encoded by this gene is the receptor for colony stimulating factor 1, a cytokine which controls the production, differentiation, and function of macrophages. This receptor mediates most if not all of the biological effects of this cytokine. Ligand binding activates the receptor kinase through a process of oligomerization and transphosphorylation. The encoded protein is a tyrosine kinase transmembrane receptor and member of the CSF1/PDGF receptor family of tyrosine-protein kinases. Mutations in this gene have been associated with a predisposition to myeloid malignancy. The first intron of this gene contains a transcriptionally inactive ribosomal protein L7 processed pseudogene oriented in the opposite direction. [provided by RefSeq]

Other Designations CD115 antigen|FMS proto-oncogene|McDonough feline sarcoma viral (v-fms) oncogene homolog|macrophage colony stimulating factor I receptor|soluble CSF1R variant 1

Gene Info — GRAP2

Entrez GeneID [9402](#)

Gene Name GRAP2

Gene Alias GADS, GRAP-2, GRB2L, GRBLG, GRID, GRPL, GrbX, Grf40, Mona, P38

Gene Description GRB2-related adaptor protein 2

Omim ID [604518](#)

Gene Ontology [Hyperlink](#)

Gene Summary

This gene encodes a member of the GRB2/Sem5/Drk family. This member is an adaptor-like protein involved in leukocyte-specific protein-tyrosine kinase signaling. Like its related family member , GRB2-related adaptor protein (GRAP), this protein contains an SH2 domain flanked by two SH3 domains. This protein interacts with other proteins, such as GRB2-associated binding protein 1 (GAB1) and the SLP-76 leukocyte protein (LCP2), through its SH3 domains. Transcript variants utilizing alternative polyA sites exist. [provided by RefSeq]

Other Designations

GRB-2-like protein|GRB2-related protein with insert domain|OTTHUMP00000028837|SH3-SH2-SH3 adaptor molecule|growth factor receptor-binding protein|growth factor receptor-bound protein 2-related adaptor protein 2|hematopoietic cell-associated adaptor protein

Pathway

- [Cytokine-cytokine receptor interaction](#)
- [Endocytosis](#)
- [Hematopoietic cell lineage](#)
- [Pathways in cancer](#)
- [T cell receptor signaling pathway](#)

Disease

- [Asthma](#)
- [Carcinoma](#)
- [Disease Progression](#)
- [Genetic Predisposition to Disease](#)
- [Genetic Predisposition to Disease](#)
- [Heart Defects](#)
- [Hepatitis C](#)
- [Liver Neoplasms](#)
- [Lung Neoplasms](#)
- [Myelodysplastic Syndromes](#)
- [Pancreatic cancer](#)

- [Pancreatic Neoplasms](#)
- [Pulmonary Disease](#)
- [Purpura](#)
- [Tobacco Use Disorder](#)
- [Tobacco Use Disorder](#)
- [Urinary Bladder Neoplasms](#)
- [Viremia](#)
- [Werner syndrome](#)