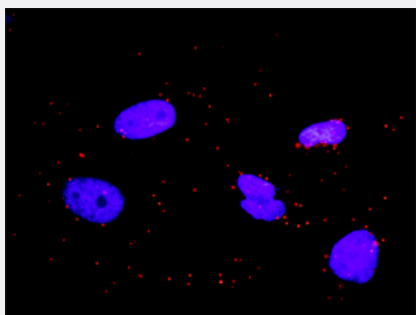


GAB1 & CRKL Protein Protein Interaction Antibody Pair

Catalog # DI0106

Size 1 Set

Applications



Representative image of Proximity Ligation Assay of protein-protein interactions between GAB1 and CRKL. HeLa cells were stained with anti-GAB1 rabbit purified polyclonal antibody 1:1200 and anti-CRKL mouse monoclonal antibody 1:50. Each red dot represents the detection of protein-protein interaction complex. The images were analyzed using an optimized freeware (BlobFinder) download from The Centre for Image Analysis at Uppsala University.

Specification

Product Description

This protein protein interaction antibody pair set comes with two antibodies to detect the protein-protein interaction, one against the GAB1 protein, and the other against the CRKL protein for use in [in situ Proximity Ligation Assay](#). [See Publication Reference below](#).

Reactivity

Human

Quality Control Testing

Protein protein interaction immunofluorescence result.
Representative image of Proximity Ligation Assay of protein-protein interactions between GAB1 and CRKL. HeLa cells were stained with anti-GAB1 rabbit purified polyclonal antibody 1:1200 and anti-CRKL mouse monoclonal antibody 1:50. Each red dot represents the detection of protein-protein interaction complex. The images were analyzed using an optimized freeware (BlobFinder) download from The Centre for Image Analysis at Uppsala University.

Supplied Product

Antibody pair set content:
1. GAB1 rabbit purified polyclonal antibody (100 ug)
2. CRKL mouse monoclonal antibody (40 ug)
*Reagents are sufficient for at least 30-50 assays using recommended protocols.

Storage Instruction

Store reagents of the antibody pair set at -20°C or lower. Please aliquot to avoid repeated freeze-thaw cycle. Reagents should be returned to -20°C storage immediately after use.

Applications

- *In situ* Proximity Ligation Assay (Cell)

Gene Info — CRKL

Entrez GeneID	1399
Gene Name	CRKL
Gene Alias	-
Gene Description	v-crk sarcoma virus CT10 oncogene homolog (avian)-like
Omim ID	602007
Gene Ontology	Hyperlink
Gene Summary	This gene encodes a protein kinase containing SH2 and SH3 (src homology) domains which has been shown to activate the RAS and JUN kinase signaling pathways and transform fibroblasts in a RAS-dependent fashion. It is a substrate of the BCR-ABL tyrosine kinase, plays a role in fibroblast transformation by BCR-ABL, and may be oncogenic
Other Designations	v-crk avian sarcoma virus CT10 oncogene homolog-like

Gene Info — GAB1

Entrez GeneID	2549
Gene Name	GAB1
Gene Alias	-
Gene Description	GRB2-associated binding protein 1
Omim ID	604439
Gene Ontology	Hyperlink
Gene Summary	The protein encoded by this gene is a member of the IRS1-like multisubstrate docking protein family. It is an important mediator of branching tubulogenesis and plays a central role in cellular growth response, transformation and apoptosis. Two transcript variants encoding different isoforms have been found for this gene. [provided by RefSeq]
Other Designations	-

Pathway

- [Chemokine signaling pathway](#)
- [Chronic myeloid leukemia](#)
- [ErbB signaling pathway](#)
- [ErbB signaling pathway](#)
- [Fc gamma R-mediated phagocytosis](#)
- [Focal adhesion](#)
- [Insulin signaling pathway](#)
- [MAPK signaling pathway](#)
- [Neurotrophin signaling pathway](#)
- [Neurotrophin signaling pathway](#)
- [Pathways in cancer](#)
- [Regulation of actin cytoskeleton](#)
- [Renal cell carcinoma](#)
- [Renal cell carcinoma](#)

Disease

- [Atrophy](#)
- [Cardiovascular Diseases](#)
- [Cardiovascular Diseases](#)
- [Diabetes Mellitus](#)
- [Diabetes Mellitus](#)
- [Edema](#)
- [Edema](#)
- [Gastritis](#)

- [Genetic Predisposition to Disease](#)
- [Helicobacter Infections](#)
- [Metaplasia](#)
- [Narcolepsy](#)
- [Stomach Neoplasms](#)