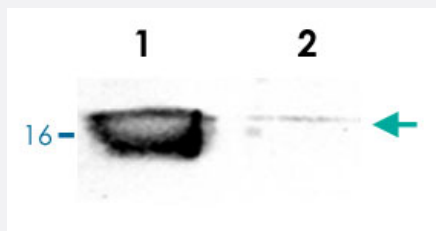


Sod1 polyclonal antibody

Catalog # PAB0725 Size 100 uL

Applications

Western Blot



Western blot detection of mouse Sod1 in mouse brain tissue extracts (lane 1) when using rabbit Sod1 polyclonal antibody (Cat # PAB0725) at a dilution of 1 : 500 . The immunoreactivity of this antibody is completely abolished when it is pre - incubated with the immunising Sod1 peptide (lane 2) .

Specification

Product Description	Rabbit polyclonal antibody raised against synthetic peptide of Sod1.
Immunogen	A synthetic peptide (conjugated diphtheria toxoid) corresponding to amino acids 24-36 of mouse Sod1.
Sequence	ASGEPVVLSGQIT
Host	Rabbit
Reactivity	Mouse, Rat
Form	Lyophilized
Recommend Usage	Western Blot (1:500-1:1000) The optimal dilution should be determined by the end user.
Storage Buffer	Lyophilized from PBS
Storage Instruction	Store at -20°C on dry atmosphere. Aliquot to avoid repeated freezing and thawing.

Applications

- Western Blot

Western blot detection of mouse Sod1 in mouse brain tissue extracts (lane 1) when using rabbit Sod1 polyclonal antibody (Cat # PAB0725) at a dilution of 1 : 500 . The immunoreactivity of this antibody is completely abolished when it is pre - incubated with the immunising Sod1 peptide (lane 2) .

Gene Info — Sod1

Entrez GeneID	20655
---------------	-----------------------

Protein Accession#	P08228
--------------------	------------------------

Gene Name	Sod1
-----------	------

Gene Alias	B430204E11Rik, Cu/Zn-SOD, CuZnSOD, lpo-1, lpo1, MGC107553, SODC, Sod-1
------------	--

Gene Description	superoxide dismutase 1, soluble
------------------	---------------------------------

Gene Ontology	Hyperlink
---------------	---------------------------

Gene Summary	O
--------------	---

Other Designations	Cu(2+)-Zn2+ superoxide dismutase
--------------------	----------------------------------

Publication Reference

- [Circumventing the Crabtree Effect: A method to induce lactate consumption and increase oxidative phosphorylation in cell culture.](#)

Mot AI, Liddell JR, White AR, Crouch PJ.

The International Journal of Biochemistry & Cell Biology 2016 Aug; 79:128.

Application: WB-Ce, Mouse, Primary mouse embryonic fibroblasts