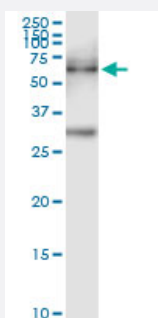


PKMYT1 (Human) IP-WB Antibody Pair

Catalog # H00009088-PW1

Size 1 Set

Applications



Immunoprecipitation of PKMYT1 transfected lysate using rabbit polyclonal anti-PKMYT1 and Protein A Magnetic Bead ([U0007](#)), and immunoblotted with mouse purified polyclonal anti-PKMYT1.

Specification

Product Description	This IP-WB antibody pair set comes with one antibody for immunoprecipitation and another to detect the precipitated protein in western blot.
Reactivity	Human
Interspecies Antigen Sequence	Mouse (89); Rat (89)
Quality Control Testing	Immunoprecipitation-Western Blot (IP-WB) Immunoprecipitation of PKMYT1 transfected lysate using rabbit polyclonal anti-PKMYT1 and Protein A Magnetic Bead (U0007), and immunoblotted with mouse purified polyclonal anti-PKMYT1.
Supplied Product	Antibody pair set content: 1. Antibody pair for IP: rabbit polyclonal anti-PKMYT1 (300 ul) 2. Antibody pair for WB: mouse purified polyclonal anti-PKMYT1 (50 ug)
Storage Instruction	Store reagents of the antibody pair set at -20°C or lower. Please aliquot to avoid repeated freeze thaw cycle. Reagents should be returned to -20°C storage immediately after use.

Applications

- Immunoprecipitation-Western Blot

[Protocol Download](#)

Gene Info — PKMYT1

Entrez GeneID [9088](#)

Gene Name PKMYT1

Gene Alias DKFZp547K1610, FLJ20093, MYT1

Gene Description protein kinase, membrane associated tyrosine/threonine 1

Omim ID [602474](#)

Gene Ontology [Hyperlink](#)

Gene Summary The protein encoded by this gene is a member of the serine/threonine protein kinase family. This kinase preferentially phosphorylates and inactivates cell division cycle 2 protein (CDC2), and thus negatively regulates cell cycle G2/M transition. This kinase is associated with the membrane throughout the cell cycle. Its activity is highly regulated during the cell cycle. Protein kinases AKT1/PKB and PLK (Polo-like kinase) have been shown to phosphorylate and regulate the activity of this kinase. Alternatively spliced transcript variants encoding distinct isoforms have been reported. [provided by RefSeq]

Other Designations membrane-associated tyrosine- and threonine-specific cdc2-inhibitory kinase|protein kinase Myt1

Pathway

- [Cell cycle](#)