

## RAF1 (phospho S43) polyclonal antibody

Catalog # : PAB0592

Size : [ 100 ug ]

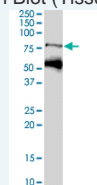
List All

### Specification

<b>Product Description:</b>	Rabbit polyclonal antibody raised against synthetic phosphopeptide of RAF1.
<b>Immunogen:</b>	Synthetic phosphopeptide (conjugated with KLH) corresponding to residues surrounding S43 of human RAF1.
<b>Host:</b>	Rabbit
<b>Cross Reactivity:</b>	Human
<b>Form:</b>	Liquid
<b>Storage Buffer:</b>	In PBS (0.09% sodium azide)
<b>Storage Instruction:</b>	Store at 4°C. For long term storage store at -20°C. Aliquot to avoid repeated freezing and thawing.
<b>Recommend Usage:</b>	The optimal working dilution should be determined by the end user.
<b>Note:</b>	This product contains sodium azide: a POISONOUS AND HAZARDOUS SUBSTANCE which should be handled by trained staff only.

### Application Image

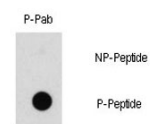
Western Blot (Tissue lysate)



[enlarge](#)

ELISA

Dot Blot (Peptide)



Dot Blot

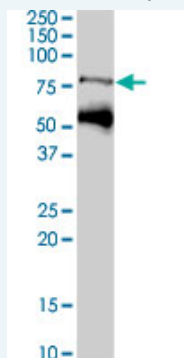
[enlarge](#)

### Publication Reference

- [Disruption of the Rb--Raf-1 interaction inhibits tumor growth and angiogenesis.](#)  
Dasgupta P, Sun J, Wang S, Fusaro G, Betts V, Padmanabhan J, Sebti SM, Chellappan SP. Mol Cell Biol. 2004 Nov;24(21):9527-41.
- [Raf-1 activation disrupts its binding to keratins during cell stress.](#)  
Ku NO, Fu H, Omary MB. J Cell Biol. 2004 Aug 16;166(4):479-85.
- [Change in protein flexibility upon complex formation: analysis of Ras-Raf using molecular dynamics and a molecular framework approach.](#)  
Gohlke H, Kuhn LA, Case DA. Proteins. 2004 Aug 1;56(2):322-37.

### Applications

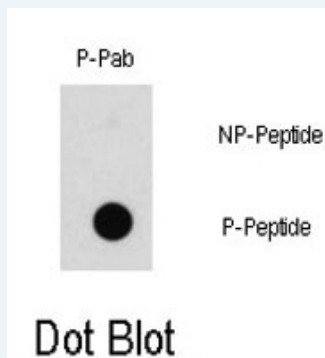
Western Blot (Tissue lysate)



RAF1 (phospho S43) polyclonal antibody ( Cat # PAB0592 ). Western blot analysis of RAF1 expression in human kidney.

## ELISA

## Dot Blot (Peptide)



Dot blot analysis of RAF1 ( phospho S43 ) polyclonal antibody ( Cat # PAB0592 ) on nitrocellulose membrane. 50 ng of Phospho-peptide or Non Phospho-peptide per dot were adsorbed. Antibodies working concentration was 0.5 ug/mL.

---

**Gene Information**

**Entrez GeneID:** [5894](#)

**Protein Accession#:** [NP\\_002871; P04049](#)

**Gene Name:** RAF1

**Gene Alias:** CRAF,NS5,Raf-1,c-Raf

**Gene Description:** v-raf-1 murine leukemia viral oncogene homolog 1

**Omim ID:** [164760](#), [611553](#), [611554](#)

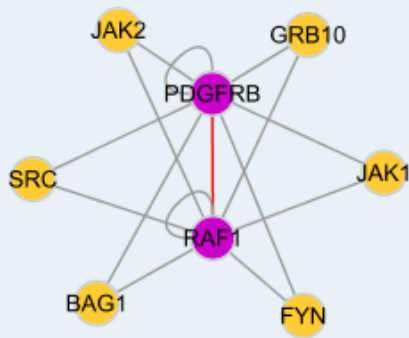
**Gene Ontology:** [Hyperlink](#)

**Gene Summary:**

**Other Designations:** Oncogene RAF1,raf proto-oncogene serine/threonine protein kinase

---

**Interactome**



### Gene Pathway

[Acute myeloid leukemia](#) [B cell receptor signaling pathway](#) [Bladder cancer](#) [Chemokine signaling pathway](#)  
[Chronic myeloid leukemia](#) [Colorectal cancer](#) [Endometrial cancer](#) [ErbB signaling pathway](#) [Fc epsilon RI signaling pathway](#)  
[Fc gamma R-mediated phagocytosis](#) [Focal adhesion](#) [Gap junction](#) [Glioma](#) [GnRH signaling pathway](#)  
[Insulin signaling pathway](#) [Long-term depression](#) [Long-term potentiation](#) [MAPK signaling pathway](#)  
[Melanogenesis](#) [Melanoma](#) [Natural killer cell mediated cytotoxicity](#) [Neurotrophin signaling pathway](#)  
[Non-small cell lung cancer](#) [Pancreatic cancer](#) [Pathways in cancer](#) [Prostate cancer](#) [Regulation of actin cytoskeleton](#)  
[Renal cell carcinoma](#) [T cell receptor signaling pathway](#) [Vascular smooth muscle contraction](#) [VEGF signaling pathway](#)

### Related Disease

[Abnormalities, Multiple](#) [Arrhythmias, Cardiac](#) [Articulation Disorders](#) [Cardiovascular Diseases](#) [Cognition](#)  
[Cognition Disorders](#) [Developmental Disabilities](#) [Diabetes Mellitus, Type 2](#) [Dyslexia, Acquired](#) [Edema](#)  
[Genetic Predisposition to Disease](#) [Glioma](#) [Hearing](#) [Heart Defects, Congenital](#) [Hypertrophy, Left Ventricular](#)  
[Language Disorders](#) [LEOPARD Syndrome](#) [Memory](#)  
[Motor Skills](#)

[... see more](#)

### Related Product

H00005894-R01V [RAF1 Validated Chimera RNAi](#)  
 PAB1669 [RAF1 \(phospho S339\) polyclonal antibody](#)  
 H00005894-B01P [RAF1 purified MaxPab mouse polyclonal antibody \(B01P\)](#)  
 P1449 [RAF1 S296 Peptide](#)  
 P1485 [RAF1 S43 Peptide](#)  
 P1487 [RAF1 S471 Peptide](#)  
 P1498 [RAF1 T269 Peptide](#)  
 PAB17919 [RAF1 \(phospho S259\) polyclonal antibody](#)

H00005894-A01	<u>RAF1 polyclonal antibody (A01)</u>
PAB0590	<u>RAF1 (phospho S338) polyclonal antibody</u>
PAB0591	<u>RAF1 (phospho S296) polyclonal antibody</u>
PAB0593	<u>RAF1 (phospho S471) polyclonal antibody</u>
PAB0594	<u>RAF1 (phospho T269) polyclonal antibody</u>
H00005894-T01	<u>RAF1 293T Cell Transient Overexpression Lysate(Denatured)</u>
H00005894-R03	<u>RAF1 Pre-design Chimera RNAi</u>
PAB5545	<u>RAF1 polyclonal antibody</u>
DP0019	<u>RAF1(phospho S339) &amp; RAF1 Protein Phosphorylation Antibody Pair</u>
PAB8117	<u>RAF1 (phospho S259) polyclonal antibody</u>
PAB8119	<u>RAF1 (phospho Y340) polyclonal antibody</u>
PAB8133	<u>RAF1 (phospho S494) polyclonal antibody</u>
PAB8148	<u>RAF1 (phospho Y341) polyclonal antibody</u>
DP0109	<u>RAF1(phospho S338) &amp; RAF1 Protein Phosphorylation Antibody Pair</u>
DP0275	<u>RAF1(phospho S494) &amp; RAF1 Protein Phosphorylation Antibody Pair</u>
PAB12259	<u>RAF1 (phospho S338) polyclonal antibody</u>
MAB5144	<u>RAF1 monoclonal antibody, clone PS338 [DPR/2/2A/3A]</u>
MAB6771	<u>RAF1 monoclonal antibody, clone M208</u>
H00005894-Q01	<u>RAF1 Recombinant Protein (Q01)</u>
TM0005	<u>Protein MultiColor Marker</u>
TM0006	<u>Protein Recombinant Marker</u>
TM0007	<u>Protein Recombinant MultiColor Marker</u>
TM0004	<u>Protein BlueRed Marker</u>
H00005894-M03	<u>RAF1 monoclonal antibody (M03), clone 1H4</u>
PAB3487	<u>RAF1 polyclonal antibody</u>
PAB3488	<u>RAF1 polyclonal antibody</u>
PAB3489	<u>RAF1 polyclonal antibody</u>
PAB3490	<u>RAF1 polyclonal antibody</u>
PAB3491	<u>RAF1 polyclonal antibody</u>
PAB3492	<u>RAF1 polyclonal antibody</u>
PAB3493	<u>RAF1 polyclonal antibody</u>

PAB3494	<a href="#"><u>RAF1 polyclonal antibody</u></a>
PAB3495	<a href="#"><u>RAF1 polyclonal antibody</u></a>
PAB3496	<a href="#"><u>RAF1 polyclonal antibody</u></a>
PAB7667	<a href="#"><u>RAF1 polyclonal antibody</u></a>
DP0003	<a href="#"><u>RAF1(phospho S259) &amp; RAF1 Protein Phosphorylation Antibody Pair</u></a>
DP0029	<a href="#"><u>RAF1(phospho Y340) &amp; RAF1 Protein Phosphorylation Antibody Pair</u></a>
DP0129	<a href="#"><u>RAF1(phospho S259) &amp; RAF1 Protein Phosphorylation Antibody Pair</u></a>
PAB18217	<a href="#"><u>RAF1 polyclonal antibody</u></a>
H00005894-P01	<a href="#"><u>RAF1 Recombinant Protein (P01)</u></a>
PAB7870	<a href="#"><u>RAF1 polyclonal antibody</u></a>
PAB11045	<a href="#"><u>RAF1 (phospho S259) polyclonal antibody</u></a>
P1578	<a href="#"><u>RAF1 S259 Peptide</u></a>
P1580	<a href="#"><u>RAF1 Y340 Peptide</u></a>
P1594	<a href="#"><u>RAF1 S494 Peptide</u></a>
P1609	<a href="#"><u>RAF1 Y341 Peptide</u></a>
P1644	<a href="#"><u>RAF1 S339 Peptide</u></a>
P2830	<a href="#"><u>RAF1 (N-term) Peptide</u></a>
P2831	<a href="#"><u>RAF1 T491 Peptide</u></a>
P2832	<a href="#"><u>RAF1 S494 Peptide</u></a>
P2833	<a href="#"><u>RAF1 S621 Peptide</u></a>
P2834	<a href="#"><u>RAF1 S233 Peptide</u></a>
P2835	<a href="#"><u>RAF1 S296 Peptide</u></a>
P2836	<a href="#"><u>RAF1 S338 Peptide</u></a>
P2837	<a href="#"><u>RAF1 Y340 Peptide</u></a>
P2838	<a href="#"><u>RAF1 S471 Peptide</u></a>
P2839	<a href="#"><u>RAF1 T269 Peptide</u></a>
PAB18238	<a href="#"><u>RAF1 polyclonal antibody</u></a>
PAB18335	<a href="#"><u>RAF1 polyclonal antibody</u></a>