

## DYM monoclonal antibody (M01), clone 1C2

Catalog # : H00054808-M01

規格 : [ 100 ug ]

[List All](#)

### Specification

**Product Description:** Mouse monoclonal antibody raised against a partial recombinant DYM.

**Immunogen:** DYM (NP\_060123, 343 a.a. ~ 430 a.a) partial recombinant protein with GST tag. MW of the GST tag alone is 26 KDa.

**Sequence:** QTSDQATLLLYTLLHQNSNIRTYMLARTDMENLVLPILEILYHVEERNSHH  
VYMALIILLILTEDDGFNRSIHEVILKNITWYSERVL

**Host:** Mouse

**Reactivity:** Human

**Isotype:** IgG1 Kappa

**Quality Control Testing:** Antibody Reactive Against Recombinant Protein.

**Storage Buffer:** In 1x PBS, pH 7.4

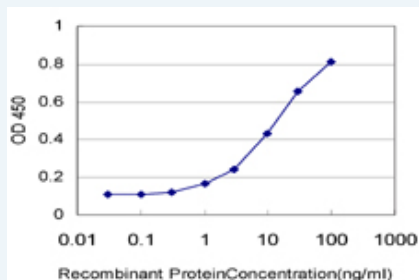
**Storage Instruction:** Store at -20°C or lower. Aliquot to avoid repeated freezing and thawing.

**MSDS:**  [Download](#)


**Datasheet:**  [Download](#)

### Applications

#### Sandwich ELISA (Recombinant protein)



Detection limit for recombinant GST tagged DYM is approximately 1ng/ml as a capture antibody.

 [Protocol Download](#)

#### ELISA

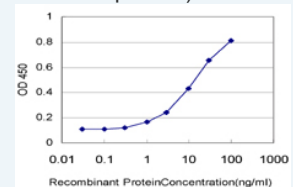
### Gene Information


**Entrez GeneID:** [54808](#)

**GeneBank Accession#:** [NM\\_017653](#)

### Application Image

Sandwich ELISA (Recombinant protein)



 [enlarge](#)

ELISA

**Protein** [NP\\_060123](#)

**Accession#:**

**Gene Name:** DYM

**Gene Alias:** DMC,FLJ20071,FLJ90130,SMC

**Gene Description:** dymeclin

**Omim ID:** [223800](#), [607326](#), [607461](#)

**Gene Ontology:** [Hyperlink](#)

**Gene Summary:** This gene encodes a protein which is necessary for normal skeletal development and brain function. Mutations in this gene are associated with two types of recessive osteochondrodysplasia, Dyggve-Melchior-Clausen (DMC) dysplasia and Smith-McCort (SMC) dysplasia, which involve both skeletal defects and mental retardation. [provided by RefSeq]

**Other Designations:** -

#### **Related Disease**

[Diabetes Mellitus, Type 2](#) [Tobacco Use Disorder](#)

[服務條款](#) | [隱私權政策](#) | [著作及商標](#) | [網站地圖](#)

©2016 亞諾法生技股份有限公司 Abnova Corporation. 版權所有.