

## FAM29A (Human) Recombinant Protein (P01)

Catalog # : H00054801-P01

規格 : [ 10 ug ] [ 25 ug ]

[List All](#)

### Specification

**Product Description:** Human FAM29A full-length ORF ( NP\_060115.3, 1 a.a. - 955 a.a.) recombinant protein with GST-tag at N-terminal.

**Sequence:** MSSASVTAFEKEHLWMYLQALGFEPGPATACGKIVSHTHLGVNMFDKL  
NRDAFHIIISYFLFQVLDQSLTKEVFKFCWPPFDQKSDTEFRKHCCWEWIKR  
ISGECGSSFPQVVGSLFLSPGGPKFIHLMYHFARFVAMKYIKSNKSNSSH  
HFVETFNIKPDLDLHKCIARCHFARSFRLQILQRQDCVTQKYQENAQLSVK  
QVRNLRSECIQLENQIKKMEPYDDHNSNMEEKIQKVRSLWASVNETLMFLE  
KEREVSSVLSLVNQYALDGTNVAINIPRLLLDKIEKQMFQLHIGNVYEAG  
KLNLLTVIQLLNEVLKVMKYERCQADQARLTVDLHYLEKETKFQKERLSD  
LKHMYRIKDDLTTIRHSVVEKQGEWHKKWKEFLGLSPFSLIKGWTSPV  
DLLPPMSPLSFDPASEEVYAKSILCQYPASLPDAHQHNQENGCRGSDSD  
TLGALHDLANSFASFLSQSVSSSDRNSVTVLEKDTKMGTPKEKNEAISKKI  
PEFEVENSPLSDVAKNTESSAFGGSLPAKKSDFQKEQDHLVEEVARAV  
LSDSPQLSEGKEIKLEELIDSLGSNPFLTRNQIPRTPENLITEIRSSWRKAIE  
MEENRTKEPIQMDAEHREVLPESLPVLHNQREFSMADFLLETTVSDFGQ  
SHLTEEKVISDCECVPQKHVLTSHIDEPTQNSDILLNKKVICKQDLECLA  
FTKLSESRMETFSPAUGNRIDVMGGSEEEFMKILDHLEVSCNKPSTNKT  
MLWNSFQISSGISSKSFKDNDGILHETLPEEVGHLNFSNSSSSSEANFKLE  
PNSPMHGGTLLLEDVGGRRQTTPESDFNLQALRSRYEALKKSLSKKREE  
SYLSNSQTPERHKPELSPTPQNVQTDLTLNFDLTDLHTEHIKPSLRTSI  
GERKRSLSPLIKFSPVEQRLRTTIACSLGELPNLKEEDILNKSLDAKEPPS  
DLTR

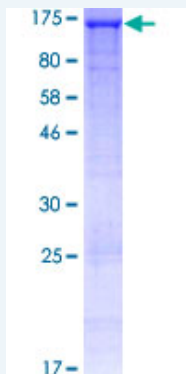
**Host:** Wheat Germ (in vitro)

**Theoretical MW (kDa):** 135

**Preparation Method:** *in vitro* wheat germ expression system

**Purification:** Glutathione Sepharose 4 Fast Flow

**Quality Control Testing:** 12.5% SDS-PAGE Stained with Coomassie Blue.



**Storage Buffer:** 50 mM Tris-HCl, 10 mM reduced Glutathione, pH=8.0 in the elution buffer.

**Storage Instruction:** Store at -80°C. Aliquot to avoid repeated freezing and thawing.

### Application Image

Enzyme-linked Immunoabsorbent Assay  
Western Blot (Recombinant protein)  
Antibody Production  
Protein Array

**Note:** Best use within three months from the date of receipt of this protein.

**MSDS:**  [Download](#)

**Datasheet:**  [Download](#)

### Applications

Enzyme-linked Immunoabsorbent Assay

Western Blot (Recombinant protein)

Antibody Production

Protein Array

### Gene Information

**Entrez GeneID:** [54801](#)

**GeneBank  
Accession#:** [NM\\_017645.3](#)

**Protein  
Accession#:** [NP\\_060115.3](#)

**Gene Name:** FAM29A

**Gene Alias:** Dgt6,MGC102696,MGC138798,MGC138799,RP11-296P7.3

**Gene  
Description:** family with sequence similarity 29, member A

**Gene Ontology:** [Hyperlink](#)

**Other  
Designations:** OTTHUMP00000021100,dim gamma-tubulin homolog

### Related Disease

[Tobacco Use Disorder](#)

[服務條款](#) | [隱私權政策](#) | [著作及商標](#) | [網站地圖](#)

©2016 亞諾法生技股份有限公司 Abnova Corporation. 版權所有.