

ROPN1 monoclonal antibody (M03), clone 4E11

Catalog # : H00054763-M03

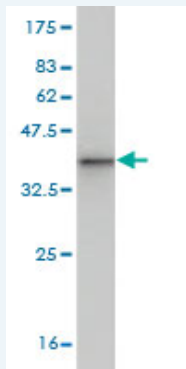
規格 : [100 ug]

[List All](#)

Specification

Product Description:	Mouse monoclonal antibody raised against a full length recombinant ROPN1.
Immunogen:	ROPN1 (AAH15413, 1 a.a. ~ 120 a.a) full-length recombinant protein with GST tag. MW of the GST tag alone is 26 KDa.
Sequence:	MWKVNLPTDLFNSVMNVGRFTEEIWLKFLALACALGVTITKTLKIVC EVLSCDHNGGLPRIPFSTFQFLYTYIAEVDGEICASHVSRMLNYIEQEVI DGLITVNDFTQNPRVWLE
Host:	Mouse
Reactivity:	Human
Isotype:	IgG2a Kappa

Quality Control Testing: Antibody Reactive Against Recombinant Protein.



Western Blot detection against Immunogen (38.94 KDa) .

Storage Buffer: In 1x PBS, pH 7.4

Storage Instruction: Store at -20°C or lower. Aliquot to avoid repeated freezing and thawing.

MSDS: [Download](#)

Datasheet: [Download](#)

Publication Reference

1. [Functional Expression of Ropporin in Human Testis and Ejaculated Spermatozoa.](#)
Chen J, Wang Y, Wei B, Lai Y, Yan Q, Gui Y, Cai Z.J Androl. 2010 Aug 12. [Epub ahead of print]

Applications

Western Blot (Recombinant protein)

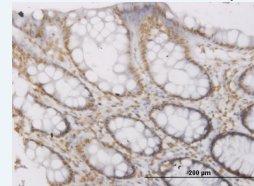
[Protocol Download](#)

Immunohistochemistry (Formalin/PFA-fixed paraffin-embedded sections)

Application Image

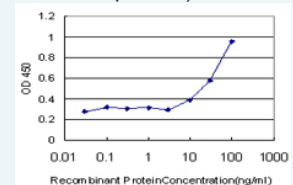
Western Blot (Recombinant protein)

Immunohistochemistry (Formalin/PFA-fixed paraffin-embedded sections)



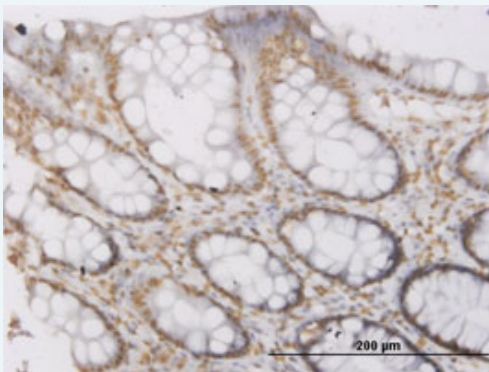
[enlarge](#)

Sandwich ELISA (Recombinant protein)



[enlarge](#)

ELISA

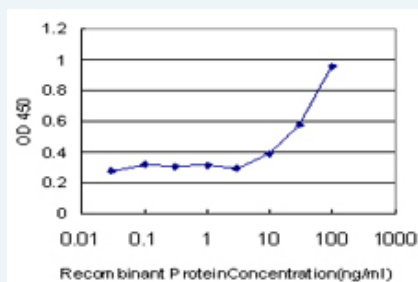


[enlarge this image](#)

Immunoperoxidase of monoclonal antibody to ROPN1 on formalin-fixed paraffin-embedded human colon. [antibody concentration 1.5 ug/ml]

[Protocol Download](#)

Sandwich ELISA (Recombinant protein)



Detection limit for recombinant GST tagged ROPN1 is approximately 10ng/ml as a capture antibody.

[Protocol Download](#)

ELISA

Gene Information

Entrez GeneID: [54763](#)

GeneBank [BC015413](#)
Accession#:

Protein [AAH15413](#)
Accession#:

Gene Name: ROPN1

Gene Alias: DKFZp434B1222,ODF6,RHPNAP1,ROPN1A,ropporin

Gene Description: ropporin, rhophilin associated protein 1

Gene Ontology: [Hyperlink](#)

Other Designations: outer dense fiber of sperm tails 6,ropporin

Related Disease

[Brain Ischemia Stroke](#)