

LZTFL1 monoclonal antibody (M01), clone 7F6

Catalog # : H00054585-M01

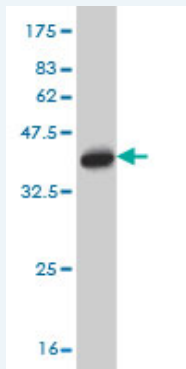
規格 : [100 ug]

[List All](#)

Specification

Product Description:	Mouse monoclonal antibody raised against a partial recombinant LZTFL1.
Immunogen:	LZTFL1 (NP_065080, 200 a.a. ~ 299 a.a) partial recombinant protein with GST tag. MW of the GST tag alone is 26 KDa.
Sequence:	KDFIKAQDLSNLENTVAALKSEFQKTLNDKTENQKSLEENLATAKHDLRLVQEQLHMAEKELEKKFQQTAAYRNMKEILTCKNDQIKDLRKRLAQYEPE D
Host:	Mouse
Reactivity:	Human
Isotype:	IgG1 Kappa

Quality Control Testing: Antibody Reactive Against Recombinant Protein.



Western Blot detection against Immunogen (36.74 KDa) .

Storage Buffer: In 1x PBS, pH 7.4

Storage Instruction: Store at -20°C or lower. Aliquot to avoid repeated freezing and thawing.

MSDS: [Download](#)

Datasheet: [Download](#)

Publication Reference

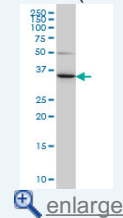
1. A Novel Protein LZTFL1 Regulates Ciliary Trafficking of the BBSome and Smoothed. Seo S, Zhang Q, Bugge K, Breslow DK, Searby CC, Nachury MV, Sheffield VC. *PLoS Genet.* 2011 Nov;7(11):e1002358. Epub 2011 Nov 3.

Applications

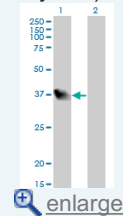
Western Blot (Cell lysate)

Application Image

Western Blot (Cell lysate)

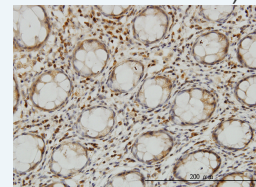


Western Blot (Transfected lysate)



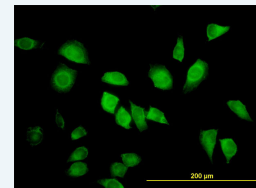
Western Blot (Recombinant protein)

Immunohistochemistry (Formalin/PFA-fixed paraffin-embedded sections)



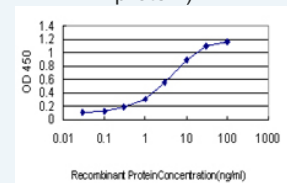
[enlarge](#)

Immunofluorescence



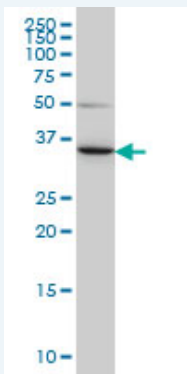
[enlarge](#)

Sandwich ELISA (Recombinant protein)



[enlarge](#)

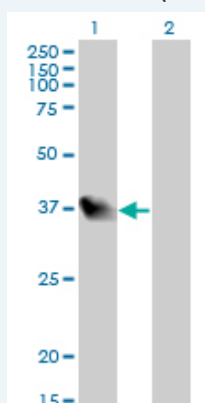
ELISA



LZTFL1 monoclonal antibody (M01), clone 7F6 Western Blot analysis of LZTFL1 expression in HeLa (Cat # L013V1).

 [Protocol Download](#)

Western Blot (Transfected lysate)




Western Blot analysis of LZTFL1 expression in transfected 293T cell line by LZTFL1 monoclonal antibody (M01), clone 7F6.

Lane 1: LZTFL1 transfected lysate(34.6 KDa).

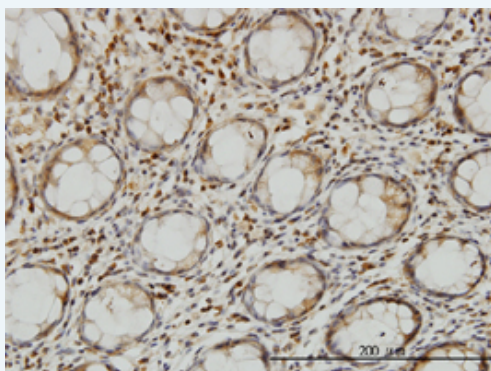
Lane 2: Non-transfected lysate.

 [Protocol Download](#)

Western Blot (Recombinant protein)


 [Protocol Download](#)

Immunohistochemistry (Formalin/PFA-fixed paraffin-embedded sections)

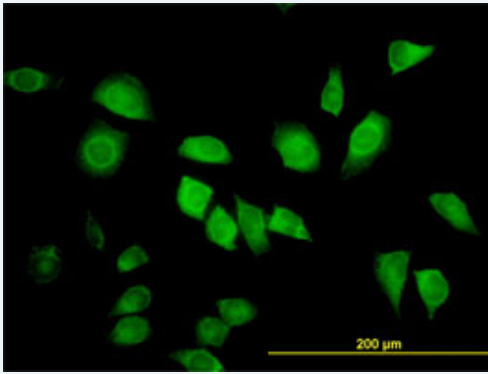


 [enlarge this image](#)

Immunoperoxidase of monoclonal antibody to LZTFL1 on formalin-fixed paraffin-embedded human colon. [antibody concentration 3 ug/ml]

 [Protocol Download](#)

Immunofluorescence

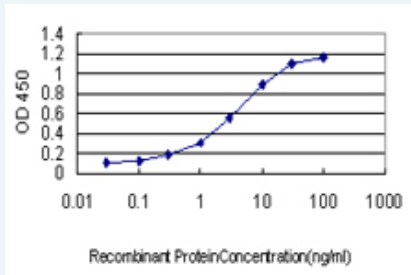


[enlarge this image](#)

Immunofluorescence of monoclonal antibody to LZTFL1 on HeLa cell. [antibody concentration 25 ug/ml]

[Protocol Download](#)

Sandwich ELISA (Recombinant protein)



Detection limit for recombinant GST tagged LZTFL1 is approximately 0.1ng/ml as a capture antibody.

[Protocol Download](#)

ELISA

Gene Information

Entrez GeneID: [54585](#)

GeneBank [NM_020347](#)

Accession#:

Protein [NP_065080](#)

Accession#:

Gene Name: LZTFL1

Gene Alias: FLJ36386

Gene Description: leucine zipper transcription factor-like 1

Description:

Omim ID: [606568](#)

Gene Ontology: [Hyperlink](#)

Other Designations: -

Designations: