

KRT20 (Human) Recombinant Protein (P01)

Catalog # : H00054474-P01

規格 : [10 ug] [25 ug]

[List All](#)

Specification

Product Description: Human KRT20 full-length ORF (AAH31559, 1 a.a. - 424 a.a.) recombinant protein with GST-tag at N-terminal.

Sequence: MDFSRRSFHRSLSSSLQAPVVSTVGMQRLGTTPSVYGGAGGRGIRISN
SRHTVNYGSDLTGGGDLFVGNEKMAMQNLNDRLASYLEKVRTLQEQSNS
KLEVQIKQWYETNAPRAGRDISAYRQIEELRSQIKDAQLNARCVLQID
NAKLAEDFRLKYETERGIRLTVEADLQGLNKVFDDLTLHKTDLQIEEL
NKDLALLKKEHQEEVDGLHKHLGNTVNEVDAAPGLNLGVIMNEMRQKY
EVMAQKNLQEAKEQFERQTAVLQQQVTVNTTELKGTVEVQLTELRRTSQ
SLEIELQSHLSMKESLEHTLEETKARYSSQLANLQSLSSLEAQLMQIRSN
MERQNNYHILLDIKTRLEQEIATYRRLLEGEDVKTTEYQLSTLEERDIKK
TRKIKTVVQEVVDGKVSSEVKEVEENI

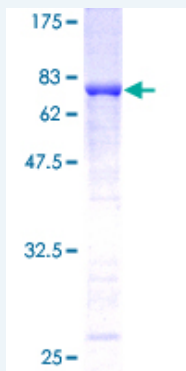
Host: Wheat Germ (in vitro)

Theoretical MW (kDa): 72.38

Preparation Method: *in vitro* wheat germ expression system

Purification: Glutathione Sepharose 4 Fast Flow

Quality Control Testing: 12.5% SDS-PAGE Stained with Coomassie Blue.



Storage Buffer: 50 mM Tris-HCl, 10 mM reduced Glutathione, pH=8.0 in the elution buffer.

Storage Instruction: Store at -80°C. Aliquot to avoid repeated freezing and thawing.

Note: Best use within three months from the date of receipt of this protein.

MSDS: [Download](#)

Interspecies Antigen Sequence: Mouse (78); Rat (80)

Datasheet: [Download](#)

Application Image

Enzyme-linked Immunoabsorbent Assay

Western Blot (Recombinant protein)

Antibody Production

Protein Array

Applications

Enzyme-linked Immunoabsorbent Assay

Western Blot (Recombinant protein)

Antibody Production

Protein Array

Gene Information

Entrez GeneID: [54474](#)

GeneBank
Accession#: [BC031559](#)

Protein
Accession#: [AAH31559](#)

Gene Name: KRT20

Gene Alias: CD20,CK20,K20,KRT21,MGC35423

Gene
Description: keratin 20

Omim ID: [608218](#)

Gene Ontology: [Hyperlink](#)

Gene Summary: The protein encoded by this gene is a member of the keratin family. The keratins are intermediate filament proteins responsible for the structural integrity of epithelial cells and are subdivided into cytokeratins and hair keratins. The type I cytokeratins consist of acidic proteins which are arranged in pairs of heterotypic keratin chains. This cytokeratin is a major cellular protein of mature enterocytes and goblet cells and is specifically expressed in the gastric and intestinal mucosa. The type I cytokeratin genes are clustered in a region of chromosome 17q12-q21. [provided by RefSeq]

Other
Designations: cytokeratin 20,keratin, type I cytoskeletal 20

Related Disease

[Genetic Predisposition to Disease Growth Disorders](#)