

ERRF1 monoclonal antibody (M01), clone 2B9

Catalog # : H00054206-M01

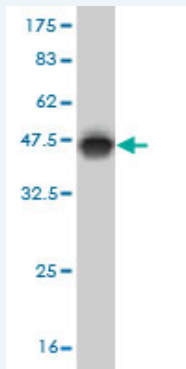
規格 : [100 ug]

[List All](#)

Specification

Product Description:	Mouse monoclonal antibody raised against a partial recombinant ERRF1.
Immunogen:	ERRF1 (NP_061821, 111 a.a. ~ 220 a.a) partial recombinant protein with GST tag. MW of the GST tag alone is 26 KDa.
Sequence:	VWCGFKLTVNGVCASTPPLTPIKNPSLFFPCAPLCERGSRPLPPLPISEA LSLDDTDCEVEFLTSSDTDFLLEDSTLSDFKYDVPGRRSFRGCGQINYA YFDTPAVSAA
Host:	Mouse
Reactivity:	Human
Isotype:	IgG1 Kappa

Quality Control Testing: Antibody Reactive Against Recombinant Protein.



Western Blot detection against Immunogen (37.84 KDa) .

Storage Buffer: In 1x PBS, pH 7.4

Storage Instruction: Store at -20°C or lower. Aliquot to avoid repeated freezing and thawing.

MSDS: [Download](#)

Interspecies: Mouse (81); Rat (82)

Antigen Sequence:

Datasheet: [Download](#)

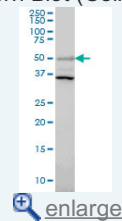
Publication Reference

- [Inhibition of KHSRP sensitizes colorectal cancer to 5-fluoruracil through miR-501-5p-mediated ERRF1 mRNA degradation.](#)
Pan R, Cai W, Sun J, Yu C, Li P, Zheng M. J Cell Physiol. 2019 Jul 16. [Epub ahead of print]

Applications

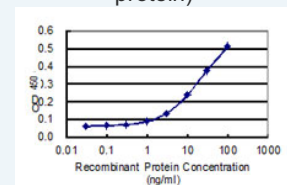
Application Image

Western Blot (Cell lysate)



Western Blot (Recombinant protein)

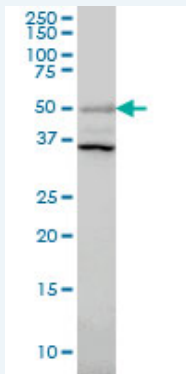
Sandwich ELISA (Recombinant protein)



[enlarge](#)

ELISA

Western Blot (Cell lysate)



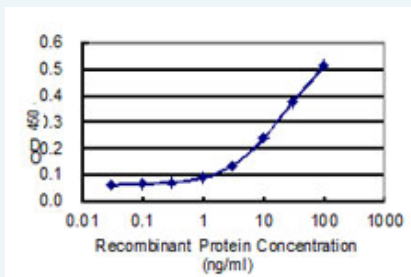
ERRF1 monoclonal antibody (M01), clone 2B9 Western Blot analysis of ERRF1 expression in HepG2 (Cat # L019V1).

[Protocol Download](#)

Western Blot (Recombinant protein)

[Protocol Download](#)

Sandwich ELISA (Recombinant protein)



Detection limit for recombinant GST tagged ERRF1 is 1 ng/ml as a capture antibody.

[Protocol Download](#)

ELISA

Gene Information

Entrez GeneID: [54206](#)

GeneBank [NM_018948](#)

Accession#:

Protein [NP_061821](#)

Accession#:

Gene Name: ERRF1

Gene Alias: GENE-33,MIG-6,MIG6,RALT

Gene Description: ERBB receptor feedback inhibitor 1

Omim ID: [608069](#)

Gene Ontology: [Hyperlink](#)

Gene Summary: ERRF1 is a cytoplasmic protein whose expression is upregulated with cell growth (Wick et al., 1995 [PubMed 7641805]). It shares significant homology with the protein product of rat gene-33, which is induced during cell stress and mediates cell signaling (Makkinje et al., 2000 [PubMed 10749885]; Fiorentino et al., 2000 [PubMed 11003669]). [supplied by OMIM]

Other OTTHUMP00000001359,mitogen-inducible gene 6,mitogen-inducible

Designations: gene 6 protein,receptor-associated late transducer

[服務條款](#) | [隱私權政策](#) | [著作及商標](#) | [網站地圖](#)

©2021 亞諾法生技股份有限公司 Abnova Corporation. 版權所有.