

TLR9 monoclonal antibody (M10), clone 2G3

Catalog # : H00054106-M10

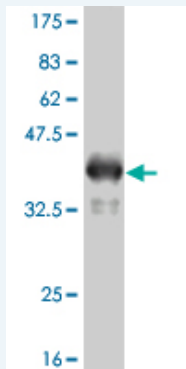
規格 : [100 ug]

List All

Specification

Product Description:	Mouse monoclonal antibody raised against a full length recombinant TLR9.
Immunogen:	TLR9 (NP_059138, 370 a.a. ~ 473 a.a) full length recombinant protein with GST tag. MW of the GST tag alone is 26 KDa.
Sequence:	DMHGIFFRSLDETTLRPLARLPMLQTLRLQMNFINQAQLGIFRAFPGLRY VDLSDNRISGASELTATMGEADGGEKWWLQPGDLAPAPVDTPSSEDFR PNCSTL
Host:	Mouse
Reactivity:	Human
Isotype:	IgG2a Kappa

Quality Control Testing: Antibody Reactive Against Recombinant Protein.



Western Blot detection against Immunogen (37.44 KDa) .

Storage Buffer: In 1x PBS, pH 7.4

Storage Instruction: Store at -20°C or lower. Aliquot to avoid repeated freezing and thawing.

MSDS: [Download](#)

Datasheet: [Download](#)

Applications

Western Blot (Recombinant protein)

[Protocol Download](#)

ELISA

Gene Information

Entrez GeneID: [54106](#)

Application Image

Western Blot (Recombinant protein)

ELISA

**GeneBank
Accession#:** [NM_017442](#)

**Protein
Accession#:** [NP_059138](#)

Gene Name: TLR9

Gene Alias: CD289

**Gene
Description:** toll-like receptor 9

Omim ID: [605474](#)

Gene Ontology: [Hyperlink](#)

Gene Summary: The protein encoded by this gene is a member of the Toll-like receptor (TLR) family which plays a fundamental role in pathogen recognition and activation of innate immunity. TLRs are highly conserved from Drosophila to humans and share structural and functional similarities. They recognize pathogen-associated molecular patterns (PAMPs) that are expressed on infectious agents, and mediate the production of cytokines necessary for the development of effective immunity. The various TLRs exhibit different patterns of expression. This gene is preferentially expressed in immune cell rich tissues, such as spleen, lymph node, bone marrow and peripheral blood leukocytes. Studies in mice and human indicate that this receptor mediates cellular response to unmethylated CpG dinucleotides in bacterial DNA to mount an innate immune response. [provided by RefSeq]

**Other
Designations:** -

Gene Pathway

[Toll-like receptor signaling pathway](#)

Related Disease

[Adenocarcinoma](#) [Anemia](#) [Arthritis](#), [Rheumatoid Arthropathy](#), [Neurogenic Aspergillosis](#) [Aspergillosis](#), [Allergic Bronchopulmonary Asthma](#) [Asthma](#) [Atherosclerosis](#) [Atherosclerosis](#) [Behcet Syndrome](#) [Birth Weight](#) [Breast Neoplasms](#) [Bronchial Hyperreactivity](#) [Bronchiolitis Obliterans](#) [Bronchiolitis](#), [Viral](#) [Calcinosis](#) [Cardiovascular Diseases](#) [Chagas](#) [Cardiomyopathy](#)

... see more