

## FAM3B monoclonal antibody (M07), clone 1E7

Catalog # : H00054097-M07

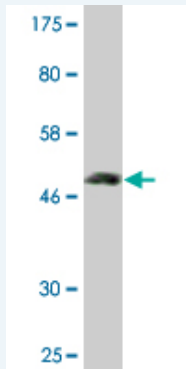
規格 : [ 100 ug ]

[List All](#)

### Specification

<b>Product Description:</b>	Mouse monoclonal antibody raised against a full-length recombinant FAM3B.
<b>Immunogen:</b>	FAM3B (AAH57829.1, 1 a.a. ~ 235 a.a) full-length recombinant protein with GST tag. MW of the GST tag alone is 26 KDa.
<b>Sequence:</b>	MRPLAGLLKVVVFVWASLCAWYSGYLLAELIPDAPLSSAAYSIRSIGERP VLKAPVPKRQKCDHWTPCPSDTYAYRLLSGGGRSKYAKICFEDNLLMG EQLGNVARGINIAMNYVTGNVTATRCFDMYEGDNSGPMTKFIQSAAPKS LLFMVYDDGSTRLNNDKNAIEALGSKEIRNMKFRSSWVFAAKGLELP SEIQREKINHSDAKNNRYSGWPAEIQIEGCIPKERS
<b>Host:</b>	Mouse
<b>Reactivity:</b>	Human
<b>Isotype:</b>	IgG1 Kappa

**Quality Control Testing:** Antibody Reactive Against Recombinant Protein.



Western Blot detection against Immunogen (51.59 KDa) .

**Storage Buffer:** In 1x PBS, pH 7.4

**Storage Instruction:** Store at -20°C or lower. Aliquot to avoid repeated freezing and thawing.

**MSDS:** [Download](#)

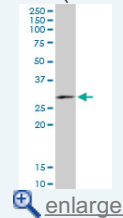
**Datasheet:** [Download](#)

### Applications

**Western Blot (Tissue lysate)**

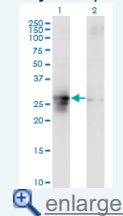
### Application Image

Western Blot (Tissue lysate)



[enlarge](#)

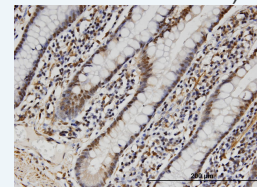
Western Blot (Transfected lysate)



[enlarge](#)

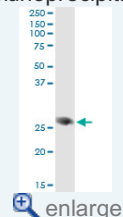
Western Blot (Recombinant protein)

Immunohistochemistry (Formalin/PFA-fixed paraffin-embedded sections)



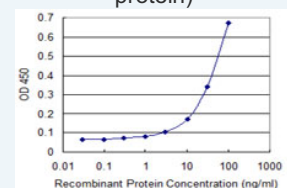
[enlarge](#)

Immunoprecipitation



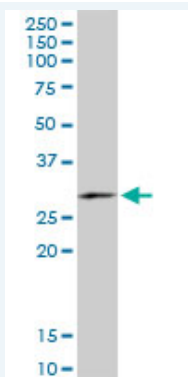
[enlarge](#)

Sandwich ELISA (Recombinant protein)



[enlarge](#)

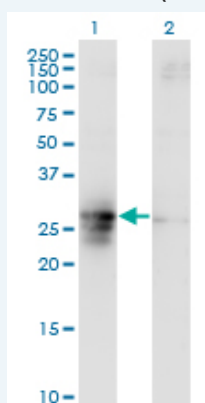
ELISA



FAM3B monoclonal antibody (M07), clone 1E7. Western Blot analysis of FAM3B expression in human kidney.

[Protocol Download](#)

#### Western Blot (Transfected lysate)



Western Blot analysis of FAM3B expression in transfected 293T cell line by FAM3B monoclonal antibody (M07), clone 1E7.

Lane 1: FAM3B transfected lysate(26 kDa).

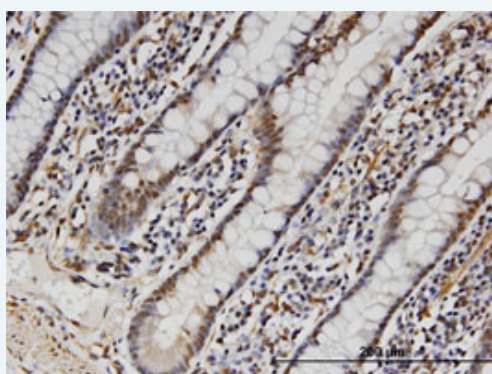
Lane 2: Non-transfected lysate.

[Protocol Download](#)

#### Western Blot (Recombinant protein)

[Protocol Download](#)

#### Immunohistochemistry (Formalin/PFA-fixed paraffin-embedded sections)

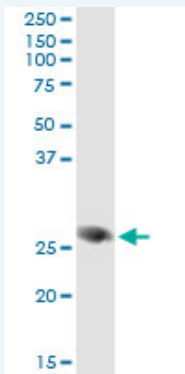


[enlarge this image](#)

Immunoperoxidase of monoclonal antibody to FAM3B on formalin-fixed paraffin-embedded human small Intestine. [antibody concentration 3 ug/ml]

[Protocol Download](#)

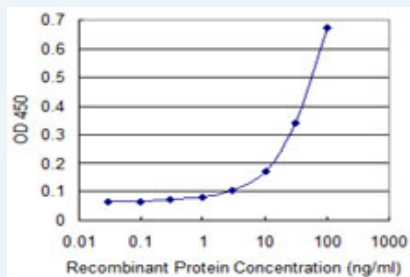
#### Immunoprecipitation



Immunoprecipitation of FAM3B transfected lysate using anti-FAM3B monoclonal antibody and Protein A Magnetic Bead ([U0007](#)), and immunoblotted with FAM3B MaxPab rabbit polyclonal antibody.

[Protocol Download](#)

### Sandwich ELISA (Recombinant protein)



Detection limit for recombinant GST tagged FAM3B is 1 ng/ml as a capture antibody.

[Protocol Download](#)

### ELISA

### Gene Information

**Entrez GeneID:** [54097](#)

**GeneBank** [BC057829](#)

**Accession#:**

**Protein** [AAH57829.1](#)

**Accession#:**

**Gene Name:** FAM3B

**Gene Alias:** 2-21,C21orf11,C21orf76,ORF9,PANDER,PRED44

**Gene Description:** family with sequence similarity 3, member B

**Description:**

**Omim ID:** [608617](#)

**Gene Ontology:** [Hyperlink](#)

**Other Designations:** D21M16SJHU19e,OTTHUMP00000109240,cytokine-like protein 2-

21,pancreatic derived factor

### Related Disease

[Tobacco Use Disorder](#)

