

## RBM11 MaxPab mouse polyclonal antibody (B01) MaxPab®

Catalog # : H00054033-B01

規格 : [ 50 uL ]

[List All](#)

### Specification

**Product Description:** Mouse polyclonal antibody raised against a full-length human RBM11 protein.

**Immunogen:** RBM11 (AAH30196.1, 1 a.a. ~ 281 a.a) full-length human protein.

**Sequence:**  
 MFPAQEEADRTVFVGNLEARVREEILYELFLQAGPLTKVTICKDREGKPK  
 SFGFVCFKHPESVSYAIALLINGIRLYGRPINVQYRFGSSRSSEPANQSFE  
 SCVKINSHNYRNEEMLVGRSSFPMQYFPINNTSLPQEYFLFQKMQWHVY  
 NPVLQLPYYEMTAPLPNSASVSSSLNHVPDLEAGPSSYKWITHQQPSDSD  
 LYQMTAPLPNSASVSSSLNHVPDLEAGPSSYKWITHQQPSDSDLYQMNK  
 RKRQKQTSDDSDSDNNRGNECSQKFRKSKKKKRY

**Host:** Mouse

**Reactivity:** Human

**Quality Control Testing:** Antibody reactive against mammalian transfected lysate.

**Storage Buffer:** No additive

**Storage Instruction:** Store at -20°C or lower. Aliquot to avoid repeated freezing and thawing.

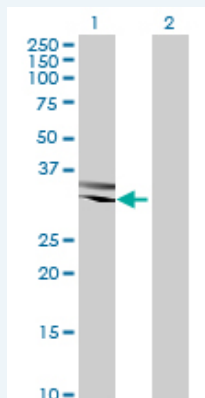
**Note:** For IHC and IF applications, antibody purification with Protein A will be needed prior to use.

**MSDS:** [Download](#)

**Datasheet:** [Download](#)

### Applications

#### Western Blot (Transfected lysate)



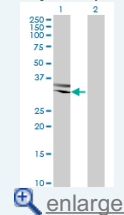
Western Blot analysis of RBM11 expression in transfected 293T cell line ([H00054033-T01](#)) by RBM11 MaxPab polyclonal antibody.

Lane 1: RBM11 transfected lysate(30.91 kDa).

Lane 2: Non-transfected lysate.

### Application Image

Western Blot (Transfected lysate)



[enlarge](#)

---

### Gene Information

---

**Entrez GeneID:** [54033](#)

---

**GeneBank  
Accession#:** [ENST00000330599](#)

---

**Protein  
Accession#:** [AAH30196.1](#)

---

**Gene Name:** RBM11

---

**Gene Alias:** -

---

**Gene  
Description:** RNA binding motif protein 11

---

**Gene Ontology:** [Hyperlink](#)

---

**Other  
Designations:** -

---