

## STX18 (Human) Recombinant Protein (Q01)

Catalog # : H00053407-Q01

規格 : [ 10 ug ] [ 25 ug ]

[List All](#)

### Specification

**Product Description:** Human STX18 partial ORF ( NP\_058626, 101 a.a. - 199 a.a.) recombinant protein with GST-tag at N-terminal.

**Sequence:** QIFMRTCSEAIQQLRTEAHKEIHSQQVKEHRTAVLDFIEDYLKRVCKLYSE QRAIRVKRVVDKKRLSKLEPEPNTKTRESTSSEKVSQSPSKDSEENPA

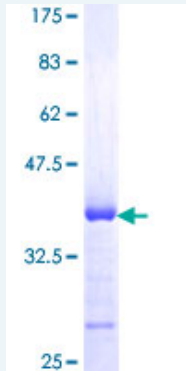
**Host:** Wheat Germ (in vitro)

**Theoretical MW (kDa):** 36.63

**Preparation Method:** *in vitro* wheat germ expression system

**Purification:** Glutathione Sepharose 4 Fast Flow

**Quality Control Testing:** 12.5% SDS-PAGE Stained with Coomassie Blue.



**Storage Buffer:** 50 mM Tris-HCl, 10 mM reduced Glutathione, pH=8.0 in the elution buffer.

**Storage Instruction:** Store at -80°C. Aliquot to avoid repeated freezing and thawing.

**Note:** Best use within three months from the date of receipt of this protein.

**MSDS:** [Download](#)

**Datasheet:** [Download](#)

### Applications

Enzyme-linked Immunoabsorbent Assay

Western Blot (Recombinant protein)

Antibody Production

Protein Array

### Application Image

Enzyme-linked Immunoabsorbent Assay

Western Blot (Recombinant protein)

Antibody Production

Protein Array

## Gene Information

---

Entrez GeneID: [53407](#)

---

GeneBank Accession#: [NM\\_016930](#)

---

Protein Accession#: [NP\\_058626](#)

---

Gene Name: STX18

---

Gene Alias: [DKFZp686O15149,Ufe1](#)

---

Gene Description: syntaxin 18

---

Omim ID: [606046](#)

---

Gene Ontology: [Hyperlink](#)

---

Other Designations: -

---

## Gene Pathway

---

[SNARE interactions in vesicular transport](#)

## Related Disease

---

[Cleft Lip](#) [Cleft Palate](#) [Genetic Predisposition to Disease](#)